

Michael Praetorius

Puer Natus In Bethlehem

Bassus Generalis
(Voces Concertates)

Éditions Douce Mémoire

Puer Natus in Bethlehem

(Ein Kind geboren zu Bethlehem)

Michael Praetorius

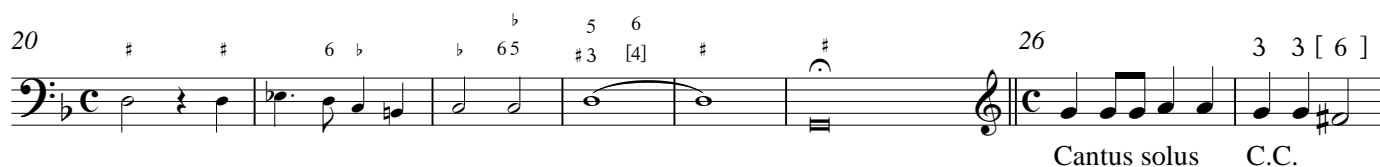
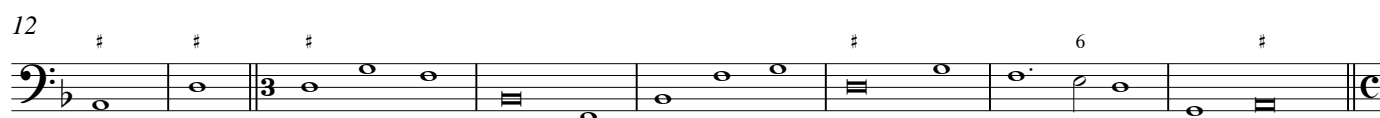
This part is to be used when separate figured bass players accompany each of the choirs. Only full size notes are to be played. Cue notes are provided to assist the players in following the entire piece.

1. Theil

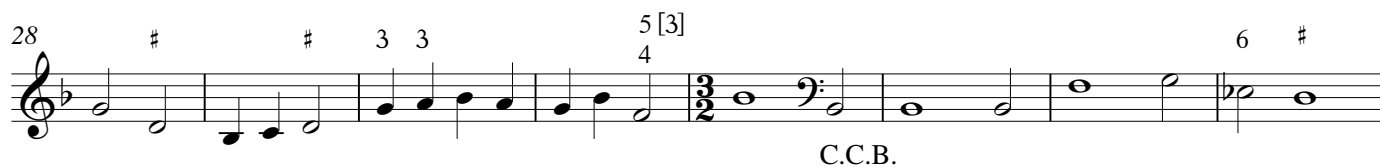
Sinfonia



Puer natus: Sinfonia. Chorus Instrumentalis.



Cantus solus C.C.



C.C.B.



Puer Natus – Bassus Generalis

1. Ritornello

45

[Tutti]

52

CCB &
Instrumenta

59

66

73

2. Ritornello

2. Ritornello vel ripieno

80

â 3

87

â 3

95

3. Ritornello

3. Ritornello vel ripieno

101

109

2. Theil

Puer Natus – Bassus Generalis

117

[illegible]

125

125

6 5
4 3

â 7

131

[illegible]

4. Ritornello

137

157

4. Ritornello [vel ripieno]

4. Ritornello [vel ripieno]

144

144

â 3

â 2 C.C.

Tutti

152

152

Example 152 is a single-staff musical score in bass clef with a key signature of one flat. The melody is composed of eighth and quarter notes, with a final measure containing a quarter rest and a common time signature.

160

160 # b # 4 # 4 # 5 6 5 6 3 4 3 4 5 6 6 6 5 [4] # #

â 3 â 7

5. Ritornello

170

170 **5. Ritornello**

The musical score for the 5th Ritornello, measures 170-175, is written in bass clef with a key signature of one flat (B-flat). The melody consists of the following notes: Measure 170: B-flat (quarter), A (quarter), G (quarter), F (quarter). Measure 171: E (quarter), D (quarter), C (quarter), B (quarter). Measure 172: A (quarter), G (quarter), F (quarter), E (quarter). Measure 173: D (quarter), C (quarter), B (quarter), A (quarter). Measure 174: G (quarter), F (quarter), E (quarter), D (quarter). Measure 175: C (quarter), B (quarter), A (quarter), G (quarter). The piece ends with a double bar line and a repeat sign.

5. Ritornello vel ripieno

176

176

Exercise 176 is in bass clef with a 3/2 time signature. The key signature has one sharp (F#). The melody consists of eighth and quarter notes with some slurs and a '6' marking above a pair of notes.

184

[illegible]