

Cornetto, Violin 1

Vespro della B. Vergine

Intonation – Tenor solo Claudio Monteverdi

De - us, in ad - iu - tú - ri - um me - um in - tén - de:

The image shows a single staff of music in treble clef. The melody consists of a series of quarter notes: G4, A4, B4, C5, B4, A4, G4, F4, E4, D4, C4. The notes are connected by a slur. The final note, C4, is followed by a double bar line. The lyrics 'De - us, in ad - iu - tú - ri - um me - um in - tén - de:' are written below the staff, with hyphens indicating syllable placement under the notes.

1 Domine ad adiuvandum

[♩ = ca 72]

f

5 [♩ = ♩.] [Violin 1] *mp*

10 [♩ = ♩.] [Tutti] *f*

cresc.

15

19 [♩ = ♩.] [Cornetto 1] *p*

24 [♩ = ♩.] [Tutti] *f*

cresc.

29

34

38

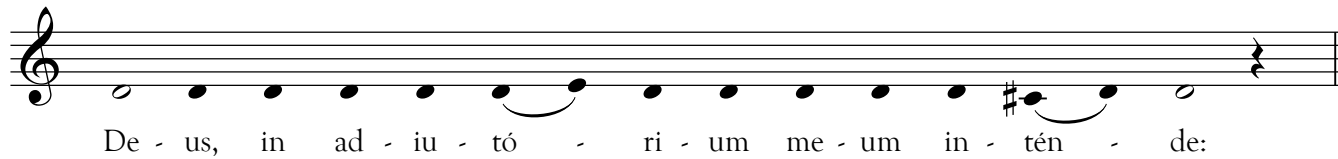
44 [♩ = ♩.] [♩ = ♩.] *p*

48 [poco rit.]

Cornetto, Violin 2

Vespro della B. Vergine

Intonation – Tenor solo Claudio Monteverdi



De - us, in ad - iu - tó - ri - um me - um in - tén - de:

1 Domine ad adiuvandum

[♩ = ca 72]

f

5 [♩ = ♩.] [Violin 2] *mp*

10 [♩ = ♩.] [Tutti] *f*
cresc.

15

19 [♩ = ♩.] [Cornetto 2] *p*

24 [♩ = ♩.] [Tutti] *f*
cresc.

30

35

39

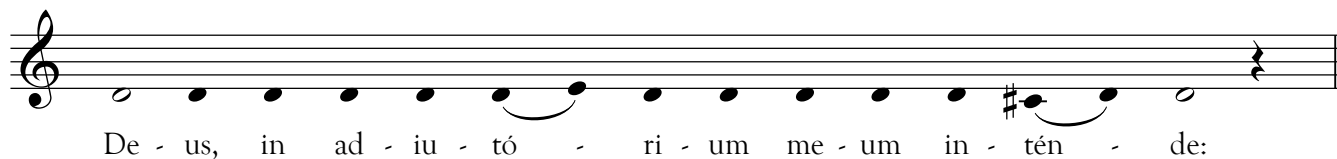
45 [♩ = ♩.] [♩ = ♩.]

48 [poco rit.]

Cornetto 3

Vespro della B. Vergine

Intonation – Tenor solo Claudio Monteverdi



De - us, in ad - iu - to - ri - um me - um in - tén - de:

The musical notation consists of a single staff with a treble clef. The melody is written in a series of eighth notes, starting on a G4 and moving stepwise up to a D5. The notes are: G4, A4, B4, C5, D5, E5, F#5, G5, A5, B5, C6. The final note is a G5, which is tied to the next note, a D6, which is also tied to the final note, a G6. The key signature has one sharp (F#).

1 Domine ad adiuvandum

[♩ = ca 72]

f

6 [♩ = ♩.] [Viola 3]

mp *cresc.*

11 [♩ = ♩.] [Tutti]

f

16

21 [♩ = ♩.] [Cornetto 3]

p *cresc.*

26 [Tutti]

f

31

36

41 [♩ = ♩.]

p

46 [♩ = ♩.]

p

49 [poco rit.]

poco rit.

Viola 3

Vespro della B. Vergine

Intonation – Tenor solo Claudio Monteverdi



De - us, in ad - iu - to - ri - um me - um in - tén - de:

1 Domine ad adiuvandum

[♩ = ca 72]

f

6 [♩ = ♩.] [Viola 3] *mp* *cresc.*

11 [♩ = ♩.] [Tutti] *f*

16

21 [♩ = ♩.] [Cornetto 3] [♩ = ♩.] *p* *cresc.*

26 [Tutti] *f*

31

36

41 [♩ = ♩.]

46 [♩ = ♩.]

49 [poco rit.]

1 Domine ad adiuvandum

[♩ = ca 72]

f

6 [♩ = ♩.] [Viola 1]

mp *cresc.*

11 [♩. = ♩.] [Tutti]

f

18 [♩ = ♩.] [Trombone 1]

p

24 [♩. = ♩.] [Tutti]

cresc. *f*

30

36

42 [♩ = ♩.]

47 [♩. = ♩.] [poco rit.]

[poco rit.]

1 Domine ad adiuvandum

[♩ = ca 72] **2** **3** **4** **5** **6** **7**

f

9 [♩ = ♩.] [Viola 2] [♩ = ♩.] [Tutti]

mp *cresc.* *f*

15 **2** **3** **4** **5** **6** **7** **8**

23 [♩ = ♩.] [Trombone 2] [♩ = ♩.] [Tutti]

p *cresc.* *f*

29 **2** **3** **4** **5** **6** **7** **8** **9** **10**

38 **11** **12** **13** **14**

45 [♩ = ♩.] [♩ = ♩.]

48 [poco rit.]

Bass Trombone, Violoncello
1 Domine ad adiuvandum

[♩ = ca 72] **2 3 4 5 6 7**

f

9 [♩ = ♩.] [Violoncello] [♩ = ♩.] [Tutti]

mp *cresc.* *f*

15 **2 3 4 5 6 7 8**

23 [♩ = ♩.] [Bass Trombone] [♩ = ♩.]

p *cresc.*

28 [Tutti] **2 3 4 5 6 7 8 9**

f

37 **10 11 12 13 14**

45 [♩ = ♩.] [♩ = ♩.]

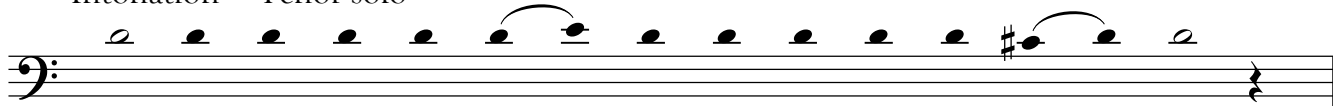
f

48 [poco rit.]

Contrabasso

Vespro della B. Vergine

Intonation – Tenor solo Claudio Monteverdi



De - us, in ad - iu - to - ri - um me - um in - tén - de:

Contrabasso

1 Domine ad adiuvandum

[♩ = ca 72] **2** **3** **4** **5** **6** **7**

f

Detailed description: This musical staff contains measures 2 through 7. It is written in bass clef with a key signature of two sharps (F# and C#) and a time signature of 6/4. The notes are: measure 2: G2, A2; measure 3: B2, C3; measure 4: D3, E3; measure 5: F3, G3; measure 6: A3, B3; measure 7: C4, D4. A fermata is placed over the final note (D4) in measure 7. The dynamic marking *f* is positioned below the first measure.

9 [♩ = ♩.] [Violoncello] [♩ = ♩.] [Tutti]

mp *cresc.* *f*

Detailed description: This musical staff contains measures 9 through 14. It is written in bass clef with a key signature of two sharps and a time signature of 6/4. Measure 9 starts with a whole rest. Measures 10-14 contain the following notes: 10: G2, A2; 11: B2, C3; 12: D3, E3; 13: F3, G3; 14: A3, B3. A time signature change to 2/2 occurs between measures 13 and 14. The dynamic markings *mp*, *cresc.*, and *f* are placed below the staff. The instruction [Tutti] is placed above the final measure.

15 **2** **3** **4** **5** **6** **7** **8**

Detailed description: This musical staff contains measures 15 through 22. It is written in bass clef with a key signature of two sharps and a time signature of 6/4. The notes are: measure 15: G2, A2; measure 16: B2, C3; measure 17: D3, E3; measure 18: F3, G3; measure 19: A3, B3; measure 20: C4, D4; measure 21: E4, F4; measure 22: G4, A4. A fermata is placed over the final note (A4) in measure 22.

23 [♩ = ♩.] [Bass Trombone] [♩ = ♩.]

p *cresc.*

Detailed description: This musical staff contains measures 23 through 27. It is written in bass clef with a key signature of two sharps and a time signature of 6/4. Measure 23 starts with a whole rest. Measures 24-27 contain the following notes: 24: G2, A2; 25: B2, C3; 26: D3, E3; 27: F3, G3. A time signature change to 2/2 occurs between measures 26 and 27. The dynamic markings *p* and *cresc.* are placed below the staff.

28 [Tutti] **2** **3** **4** **5** **6** **7** **8** **9**

f

Detailed description: This musical staff contains measures 28 through 36. It is written in bass clef with a key signature of two sharps and a time signature of 6/4. The notes are: measure 28: G2, A2; measure 29: B2, C3; measure 30: D3, E3; measure 31: F3, G3; measure 32: A3, B3; measure 33: C4, D4; measure 34: E4, F4; measure 35: G4, A4; measure 36: B4, C5. The dynamic marking *f* is positioned below the first measure. The instruction [Tutti] is placed above the first measure.

37 **10** **11** **12** **13** **14**

Detailed description: This musical staff contains measures 37 through 44. It is written in bass clef with a key signature of two sharps and a time signature of 6/4. The notes are: measure 37: G2, A2; measure 38: B2, C3; measure 39: D3, E3; measure 40: F3, G3; measure 41: A3, B3; measure 42: C4, D4; measure 43: E4, F4; measure 44: G4, A4. A fermata is placed over the final note (A4) in measure 44.

45 [♩ = ♩.] [♩ = ♩.]

Detailed description: This musical staff contains measures 45 through 47. It is written in bass clef with a key signature of two sharps and a time signature of 6/4. Measure 45 starts with a whole rest. Measures 46-47 contain the following notes: 46: G2, A2; 47: B2, C3. A time signature change to 2/2 occurs between measures 46 and 47.

48 [poco rit.]

Detailed description: This musical staff contains measures 48 through 51. It is written in bass clef with a key signature of two sharps and a time signature of 6/4. The notes are: measure 48: G2, A2; measure 49: B2, C3; measure 50: D3, E3; measure 51: F3, G3. A fermata is placed over the final note (G3) in measure 51. The instruction [poco rit.] is placed above the first measure.

1 Domine ad adiuvandum

[♩ = ca 72]

f Dó - mi - ne ad ad - iu - ván - dum

O Lord, make haste to help me.

5 [♩ = ♩.]

me fe - sti - na. *mp*

10 [♩ = ♩]

cresc. *f* Gló - ri - a

15

Pa - tri, et Fi - li - o,

Glory be to the Father, and to the Son, and to the Holy Spirit:

Continuo

19

et Spi - ri - tú - i San - cto:

23 [d. = d.]

[d. = d.]

p *cresc.*

28

f Si - cut e - rat in prin - cí - pi -

As it was in the beginning, is now, and ever shall be, ...

32

o, et nunc, et sem - per,

36

et in sæ - cu - la sæ - cu -

world without end. Amen. Alleluia.

40

ló - rum. A - men. Al - le - lú -

45 [♩ = ♩.]

[♩ = ♩.]

ia, al - le - lú - ia, al - le - lú - ia, al - le - lú -

49

[poco rit.]

ia, al - le - lú - ia.

Trumpet in B \flat 1

1 Domine ad adiuvandum

[♩ = ca 72]

f

5

[♩ = ♩.] [Violin 1]

mp *cresc.*

11 [♩ = ♩]

[Tutti]

f

16

20

[♩ = ♩.] [Trumpet 1]

p *cresc.*

25 [♩ = ♩]

[Tutti]

f

30

35

39

45 [♩ = ♩.]

[♩ = ♩]

48

[poco rit.]

1 Domine ad adiuvandum

[♩ = ca 72] *f*

5 [♩ = ♩.] [Violin 2] *mp*

10 [♩ = ♩.] [Tutti] *f*
cresc.

15

19 [♩ = ♩.] [Trumpet 2] *p*

24 [♩ = ♩.] [Tutti] *f*
cresc.

29

34

38

44 [♩ = ♩.] [♩ = ♩.]

48 [poco rit.]

1 Domine ad adiuvandum

[$\text{♩} = \text{ca } 72$]

f

6 [$\text{♩} = \text{♩.}$] [Violin 3]
mp *cresc.*

11 [$\text{♩.} = \text{♩}$] [Tutti]
f

16

21 [$\text{♩} = \text{♩.}$] [Trumpet 3] [$\text{♩.} = \text{♩}$]
p *cresc.*

26 [Tutti]
f

31

36

41 [$\text{♩} = \text{♩.}$]

46 [$\text{♩.} = \text{♩}$]

49 [poco rit.]

1 Domine ad adiuvandum

[♩ = ca 72]

f

6 [♩ = ♩.] [Violin 3] *mp* *cresc.*

11 [♩ = ♩.] [Tutti] *f*

16

21 [♩ = ♩.] [Trumpet 3] [♩ = ♩.] *p* *cresc.*

26 [Tutti] *f*

31

36

41 [♩ = ♩.]

46 [♩ = ♩.]

49 [poco rit.]

1 Domine ad adiuvandum

[♩ = ca 72]

f

6 [♩ = ♩.] [Viola 1]

mp *cresc.*

11 [♩ = ♩.] [Tutti]

f

18 [♩ = ♩.] [Trombone 1]

p

24 [♩ = ♩.] [Tutti]

cresc. *f*

30

36

42 [♩ = ♩.]

47 [♩ = ♩.] [poco rit.]

Trombone 2
1 Domine ad adiuvandum

[♩ = ca 72] **2 3 4 5 6 7**

f

Detailed description: This block contains the first system of music for measures 2 through 7. The staff is in 3/2 time with a key signature of one sharp (F#). The tempo is marked as [♩ = ca 72]. The dynamics are marked as *f*. The notes are: measure 2: G4; measure 3: A4; measure 4: B4; measure 5: C5; measure 6: B4; measure 7: A4. A slur covers measures 6 and 7, with a fermata over the final note.

9 [♩ = ♩.] [Viola 2] [♩ = ♩.] [Tutti]

mp *cresc.* *f*

Detailed description: This block contains the second system of music for measures 9 through 14. The staff is in 3/2 time with a key signature of one sharp. The tempo is marked as [♩ = ♩.] and the dynamic is *mp*. The notes are: measure 9: G4; measure 10: A4; measure 11: B4; measure 12: C5; measure 13: B4; measure 14: A4. A slur covers measures 13 and 14, with a fermata over the final note. The dynamic *f* is marked at the end of the system. The marking [Tutti] is also present.

15 **2 3 4 5 6 7 8**

Detailed description: This block contains the third system of music for measures 15 through 22. The staff is in 3/2 time with a key signature of one sharp. The notes are: measure 15: G4; measure 16: A4; measure 17: B4; measure 18: C5; measure 19: B4; measure 20: A4; measure 21: G4; measure 22: F#4. A slur covers measures 21 and 22, with a fermata over the final note.

23 [♩ = ♩.] [Trombone 2] [♩ = ♩.] [Tutti]

p *cresc.* *f*

Detailed description: This block contains the fourth system of music for measures 23 through 28. The staff is in 3/2 time with a key signature of one sharp. The tempo is marked as [♩ = ♩.] and the dynamic is *p*. The notes are: measure 23: G4; measure 24: A4; measure 25: B4; measure 26: C5; measure 27: B4; measure 28: A4. A slur covers measures 27 and 28, with a fermata over the final note. The dynamic *f* is marked at the end of the system. The marking [Tutti] is also present.

29 **2 3 4 5 6 7 8 9 10**

Detailed description: This block contains the fifth system of music for measures 29 through 37. The staff is in 3/2 time with a key signature of one sharp. The notes are: measure 29: G4; measure 30: A4; measure 31: B4; measure 32: C5; measure 33: B4; measure 34: A4; measure 35: G4; measure 36: F#4; measure 37: F#4.

38 **11 12 13 14**

Detailed description: This block contains the sixth system of music for measures 38 through 44. The staff is in 3/2 time with a key signature of one sharp. The notes are: measure 38: G4; measure 39: A4; measure 40: B4; measure 41: C5; measure 42: B4; measure 43: A4; measure 44: G4. A slur covers measures 43 and 44, with a fermata over the final note.

45 [♩ = ♩.] [♩ = ♩.]

Detailed description: This block contains the seventh system of music for measures 45 through 47. The staff is in 3/2 time with a key signature of one sharp. The tempo is marked as [♩ = ♩.] and the dynamic is *f*. The notes are: measure 45: G4; measure 46: A4; measure 47: B4. A slur covers measures 46 and 47, with a fermata over the final note.

48 [poco rit.]

Detailed description: This block contains the eighth system of music for measures 48 through 54. The staff is in 3/2 time with a key signature of one sharp. The tempo is marked as [poco rit.]. The notes are: measure 48: G4; measure 49: A4; measure 50: B4; measure 51: C5; measure 52: B4; measure 53: A4; measure 54: G4. A slur covers measures 53 and 54, with a fermata over the final note.

1 Domine ad adiuvandum

[♩ = ca 72]

f

6 [♩ = ♩.] [Violin 3]
mp cresc.

11 [♩ = ♩.] [Tutti]
f

16

21 [♩ = ♩.] [Cornetto 3] [♩ = ♩.]
p cresc.

26 [Tutti]
f

31

36

41 [♩ = ♩.]

46 [♩ = ♩.]

49 [poco rit.]