

Hotinet Barra – Missa Ecce panis angelorum

Sama
in excelsis

Dama Ecce panis angelorum factus est corpus viatorum verum in me filiorum non mittendus carnibus

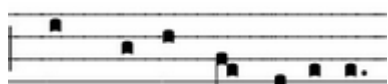
Tenor

Sama Bone pastor panis verus ihesu nostra misericordia qui nos pacis nos tuere in terra orientium in excelsis

This mass by Hotinet Barra can be found at https://digi.vatlib.it/view/MSS_Capp.Sist.26. It starts at 39v.

It is based on the chant "Ecce panis angelorum", which can be found at <http://gregorian-chant-hymns.com/hymns-2/ecce-panis-angelorum.html>

The melody of the first and second verse ('ecce panis') is used in the tenor part in Kyrie 1 and Christe; in Kyrie 2 Barra uses the melody of the third and fourth verse ('bone pastor'). In the rest of the mass the opening motif of 'ecce panis' is used very frequently, not only at the beginning of the movements. At the end of most sections Barra used a motif which was probably derived from the ending of verse 1 and 2:



Barra however inserted an extra g between the b and the c, making it a triadic motif which lacks the typical mixolydian f:



In the Osanna Barra added an extra tenor part, combining the chant melodies of 'ecce panis' and 'bone pastor'. With some adjustments, stretching of notes and inserted rests he managed to keep control of the polyphony. The 'bone pastor' melody stops after the third line and continues with a freely composed 'drive-to-the-cadence' type of melody in minims (see title page).

Dissonance treatment is occasionally pretty spicy. This is from the Credo:

127

S
San-ctum, Do mi-num, et vi-vi-

T1
- ri-tum San-ctum, Do - - - mi-num,) et

T2
Et in Spi-ri-tum San-ctum, Do-mi-num, et

B
San-ctum, Do - mi-num,

Firstly, the g in bar 127 in the top part pushes the f in T1 aside, but doesn't wait until it yields. Secondly, the a in bar 128 in S is being sandwiched by T2 and B: a simultaneous 9-8 and 7-6 dissonant-resolution. Thirdly, The tied d in T1 is being pushed from below by the c in T2, and resolves upwards to e, which is a pretty energetic way of releasing tension. The e in its turn is a dissonant (passing) note with the f in the B. Lastly, the tied g in T1 is again being attacked from two sides: the top f in S and the a in T2. As I said: a pretty spicy four bars.

Text underlay in the Kyrie is mine: at the beginning it only says Kyrieleyson (sic), and at the end Leyson. In Gloria and Credo the underlay in the manuscript was quite helpful. In the Sanctus and Agnus Dei the underlay is mostly mine. Most ligatures were 'obeyed'.

Bert Schreuder

Barra - Missa Ecce panis angelorum_Kyrie

Transposed down a major third

Hotinet Barra

Musical score for the first system of the Kyrie. It features four vocal parts: Soprano (S), Tenor 1 (T1), Tenor 2 (T2), and Bass (B). The music is in a key with three flats (B-flat, E-flat, A-flat) and a common time signature. The lyrics are: Ky - ri - e e - - - - - ley -

Musical score for the second system of the Kyrie. It features four vocal parts: Soprano (S), Tenor 1 (T1), Tenor 2 (T2), and Bass (B). The music continues from the first system. The lyrics are: - son, e - ley - son, Ky - ri - e e -

13

S
- ley - son, Ky - ri-e e - ley -

T1
8 Ky - ri-e e - ley - son, e - ley - son, Ky - ri -

T2
8 Ky - ri - e e - ley -

B
Ky - ri - e e - ley -

19

S
son, Ky - ri - e e -

T1
8 e e - ley - son, e - ley - son, Ky - ri -

T2
8 son, e - ley - son, Ky - ri -

B
son, Ky - ri - e e - ley-son, Ky - ri - e

24

S
- ley - son.

T1
8 e e-ley - son.

T2
8 e e-ley - son. Chri - ste e - ley -

B
e - ley - son. Chri - ste e - ley - son, Chri - ste e - ley -

31

S
Chri - ste e - ley -

T1
8 Chri - ste e - ley - son, Chri - ste e - ley -

T2
8 son, Chri - ste e - ley - son,

B
- son, e - ley - son, Chri -

36

S
son, Chri-ste e - ley-son, e - ley -

T1
8 son, e - ley - son, Chri -

T2
8 Chri-ste e - ley -

B
ste e - ley - son

41

S
- son, Chri - ste e - ley -

T1
8 - ste e - ley - son, Chri -

T2
8 - son, e - ley - son, Chri - ste

B
Chri-ste e - ley - son, Chri - ste e - ley -

46

S
son, Chri-ste e - ley - son, e -

T1
8 ste e - ley - - - son, Chri - ste e -

T2
8 e - ley - - - son, Chri - ste

B
son, e - ley - son, Chri - ste e - ley -

51

S
- ley - son, Chri-ste e - ley -

T1
8 - ley - son, Chri-ste e - ley -

T2
8 e - ley - son, Chri -

B
- - son, Chri - ste e - ley - son,

56

S
son, Chri - ste e - ley - -

T1
8 son, Chri - ste e - ley - son, e - ley -

T2
8 ste e - ley - - son, Chri - ste e - ley -

B
Chri - ste e - ley - son, Chri - ste e - ley -

60

S
- son, Chri-ste e - ley - son. Ky-ri -

T1
8
son, Chri-ste e - ley - son.

T2
8
- son, Chri - ste e-ley - son.

B
son, Chri - ste e - ley - son.

66

S
e e - ley - son, e - ley - son, Ky - ri-e e -

T1
8
Ky - ri - e e - ley - son, Ky -

T2
8
Ky - ri - e e - ley -

B
Ky - ri - e e - ley - son,

70

S
ley - son, Ky - ri - e e - ley-son, e - ley -

T1
8
- ri - e e - ley - son, Ky - ri - e

T2
8
son, Ky - ri - e - ley - son, e -

B
Ky - ri-e e - ley - son,

74

S
- son, Ky - ri - e e - ley -

T1
e - ley - son, e - ley - son, Ky - ri - e

T2
- ley - son, Ky - ri - e e - ley -

B
g might be better?
Ky - ri - e e - ley - son, Ky - ri - e

78

S
son, e - ley - son, Ky - ri - e e - ley - son, Ky -

T1
e - ley - son, Ky - ri - e e - ley -

T2
son, Ky - ri - e e - ley -

B
e - ley - son, Ky - ri - e e - ley - son, Ky -

81

S
- ri - e e - ley - son.

T1
- son, e - ley - son.

T2
son, Ky - ri - e e - ley - son.

B
- ri - e e - ley - son.

Barra - Missa Ecce panis angelorum_Gloria

Transposed down a major third

Hotinet Barra

Glo - ri - a in ex - cel - sis De - o.

Mez Et in ter-ra pax ho - mi - ni -

T1 Et in ter-ra pax ho-mi - ni -

T2 Et in ter-ra pax bo-nae

B Et in ter-ra pax ho-mi - ni-bus

Mez bus bo - nae vo - lun-ta - tis. Lau - da -

T1 bus bo-nae vo - lun - ta - tis. Lau - da -

T2 vo - lun - ta - tis. Lau-da -

B bo - nae vo - lun - ta - tis. Lau - da -

11

Mez
 mus te. Be-ne-di - ci - mus te. A - do - ra - mus

T1
 mus te. Be - ne - di - ci - mus (te. A - do-ra -

T2
 mus te. Be - ne - di - ci - mus te.

B
 mus te. Be - ne - di - ci - mus te. A -

16

Mez
 te.

T1
 mus) - te. *Glo-ri - fi - ca* - - - mus te.

T2
Glo-ri - fi - ca - - - mus te. Gra -

B
 do - ra - mus te. *Glo-ri - fi - ca* - - - mus te.

21

Mez
 prop-ter ma - gnam

T1
 prop - ter ma-gnam

T2
 ti - as a - gi-mus ti - bi

B
 Gra-ti - as a - gi - mus ti - bi prop -

25

Mez
T1
T2
B

glo - ri - am tu - am.
glo - ri-am tu - am.
prop - ter ma-gnam glo - ri-am tu - am. Do - mi - ne De -
ter ma-gnam glo - ri-am tu - am. Do - mi -

30

T2
B

us, Rex cae - le - stis, (Rex cae - le -
ne De - us, Rex cae - le -

36

T2
B

- stis,) De - us Pa - ter om - ni - po -
- stis, De - us Pa - ter om - ni - po -

41

Mez
T1
T2
B

Do-mi - ne Fi - li u - ni - ge - ni -
Do - mi - ne Fi - li u - ni - ge - ni - te (Je -
- tens. Do - mi - ne Fi - li u - ni - ge -
- tens. Do - mi - ne Fi - li u - ni - ge - ni -

47

Mez
te Je - su Chri - ste, Je - su Chri -

T1
- su Chri - ste,) Je - su Chri - ste, Je - su

T2
ni - te Je - su Chri - (b)

B
te Je - su Chri - ste, Je - su Chri -

54

Mez
ste.

T1
Chri - ste. Do - mi-ne De - - us,

T2
- ste.

B
- ste. Do - mi-ne De - - us, A-gnus

61

T1
A-gnus De - - i, Fi - li - us

B
De - - i, Fi-li - us Pa -

68

T1
Pa - tris, (Fi - li-us Pa - - tris,)

B
tris, Fi - li - us Pa - - tris, Fi -

73

Mez

T1

B

Qui tol-lis

Fi-li-us Pa - - tris. Qui tol-lis pec - ca -

li-us Pa - - tris.

79

Mez

T1

T2

B

pec - ca - ta mun - - di,

ta mun - di, mun - - di,

Qui tol-lis

Qui tol-lis pec - ca -

85

Mez

T1

T2

B

mi - se - re - re no -

mi - se - re - re no -

pec - ca ta mun - - di, mi - se - re - re no -

ta mun - di, (mun - - di,) mi - se - re - re no -

91

Mez
bis. Qui tol-lis pec-ca - ta mun - di, su - sci -

T1
bis. su -

T2
bis. Qui tol-lis pec-ca - ta mun - di, su - sci - pe

B
bis. su - sci -

98

Mez
pe de-pre - ca - ti - o-nem no - stram. Qui

T1
sci-pe de - pre-ca - ti - o - nem no - stram.

T2
de - pre - ca - ti - o - nem no - stram.

B
pe de - pre - ca - ti - o-nem no - stram.

104

Mez
se - des ad dex - te - ram Pa - tris, ad dex - te - ram Pa -

T1
Qui se - des ad dex - te - ram Pa - tris, (Pa -

T2
Qui se - des ad dex - te - ram Pa -

B
Qui se - des ad dex - te -

108

Mez
- tris, mi - se - re - re no - bis.

T1
- tris,) mi - se - re - re no - bis.

T2
tris, mi - se - re - re no - bis. Quo - ni -

B
ram Pa - tris, mi - se - re - re no - bis. Quo - ni - am tu

113

Mez
Tu so - lus Do - mi - nus.

T1
Tu so - lus Do - mi - nus.

T2
am tu so - lus san - - ctus.

B
so - lus san - - ctus.

118

Mez
Tu so - lus Al - tis - si - mus, Je - su Chri -

T1
Tu so - lus Al - tis - si - mus, Je - su Chri - ste, Je -

T2
Tu so - lus Al - tis - si - mus, Je - su

B
Tu so - lus Al - tis - si - mus, Je - su Chri -

123

Mez
ste, Je - su Chri - ste.

T1
su Chri - ste.

T2
Chri - - ste. Cum San - cto Spi - -

B
- - - ste. Cum San - cto Spi -

128

Mez
Cum San - cto Spi - ri - tu in glo - ri - a De -

T1
Cum San - cto Spi - ri - tu in glo - ri - a De -

T2
- ri - tu in glo - ri - a De -

B
ri - tu (Cum San - cto Spi - ri - tu in glo - ri - a De -

133

Mez
i, in glo - ri - a De - i Pa - tris. A - men.

T1
i, in glo - ri - a De - i Pa - tris. A - men.

T2
- i, in glo - ri - a De - i Pa - tris. A - men.

B
i, in glo - ri - a De - i Pa - tris. A - men.

Barra - Missa Ecce panis angelorum_Credo

Transposed down a major third

Hotinet Barra

8 Cre-do in u-num De - um.

S Pa - trem om - ni-po - ten - tem, fac-to-rem

A Pa - trem om - ni-po - ten - tem, fac-to-rem cae - li et

T

B

6 S cae - li et - ter - rae,

A ter - rae,

T Vi - si-bi - li-um om-ni-um,

B Vi - si-bi - li-um om-ni-um, et in - vi -

12

S
Et in u-num Do-mi-num Je-

A
Et in u-num Do-mi-num Je-

T
et in-vi-si-bi-li-um. Et in u-num Do-mi-num Je-

B
si-bi-li-um. Et in u-num Do-mi-num Je-

19

S
sum Chri-stum, Fi-li-um De-i u-ni-ge-ni-tum.

A
sum Chri-stum, Fi-li-um De-i u-ni-ge-ni-tum. Et

T
sum Chri-stum, Fi-li-um De-i u-ni-ge-ni-tum. Et

B
sum Chri-stum, Fi-li-um De-i u-ni-ge-ni-tum. Et

26

S
Et ex Pa-tre na-tum an-te om-ni-a sae-cu- *g in ms (=eb)*

A
ex Pa-tre na-tum an-te om-ni-a sae-cu-

T
ex Pa-tre na-tum

B
ex Pa-tre na-tum, et ex Pa-tre na-tum an-

31

S
la. De-um de De-o, lu - men de lu-mi -

A
la. De-um de De-o, lu-men de lu-mi-ne,

T
an - te om - ni - a sae - cu - la.

B
te om-ni - a sae - - cu - la.

36

S
ne, De-um ve - rum de De - o ve -

A
De-um ve - rum de De-o ve - ro. Ge - ni -

T
de De-o ve -

B
de De-o ve - ro.

41

S
ro.

A
tum, non fac - tum, con - sub - stan - ti - a - lem Pa -

T
ro.

B
Ge - ni - tum non fac - tum, con-sub - stan - ti - a -

45 *c in ms (=ab)*

S per quem om - ni - a fac - ta

A tri, (Pa - - tri:) per quem om - ni - a fac - ta sunt.

T per quem om - ni - a fac -

B lem Pa - - - tri:

50

S sunt.

A Qui prop-ter nos ho - mi - nes, et prop-ter no - stram sa -

T - ta sunt.

B Qui prop-ter nos ho - mi - nes, et prop-ter

55

S de - scen - dit de cae -

A lu - - - tem de - scen - - dit de cae -

T de - scen - - dit de cae -

B no - stram sa - lu - - tem de - scen-dit de - cae -

60

S
lis. de Spi-ri - tu San - cto ex Ma - ri - a

A
lis. de Spi-ri - tu San - cto

T
lis. Et in-car - na - tus est ex Ma - ri - a vir -

B
lis. Et in-car - na - tus est

67

S
vir - gi - ne: Et ho - mo

A
ex Ma - ri - a vir - gi - ne: Et

T
- gi - ne, ex Ma - ri - a vir - gi - ne: Et ho - mo

B
ex Ma - ri - a vir - gi - ne: Et

73

S
fac - tus est.

A
ho - mo fac - tus est. Cru-ci - fi-xus e - ti - am pro no - bis:sub

T
fac - tus est. Cru - ci - fi - xus

B
ho - mo fac - tus est. Cru - ci - fi - xus e - ti -

80

S
sub Pon - ti - o Pi - la - to

A
Pon - ti - o - Pi - la - to

T
e - ti-am pro no - bis: sub Pon-ti - o Pi - la - to

B
- am pro no - bis: pas -

86

A
pas - sus et se - pul - tus est. Et re - sur - re -

T
Et re - sur - re - xit

B
sus et se - pul - tus est. Et re-sur-re -

91

S
ter - ti - a di - e, se-cun - dum scri -

A
xit ter-ti - a di - e, se - cun - dum scri -

T
ter - ti - a di - e,

B
xit ter - ti - a di - e,

97

S ptu - ras.

A ptu - ras.

T Et a - scen-dit

B Et

102

T in cae-lum: se-det ad dex-te-ram Pa - - -

B a - scen-dit in cae - lum: se - det ad dex - te-ram Pa -

107

A cum glo-ri - a ju -

T tris. Et i - te - rum ven - tu - rus est cum glo-ri - a ju -

B tris Et i - te-rum ven-tu - rus est cum glo-ri - a ju -

112

S vi - vos et mor-tu - os:

A di - ca - re vi - vos et mor-tu - os:

T di - ca - re vi - vos et mor-tu - os: cu -

B di - ca - re vi - vos et mor-tu - os: cu - ius re -

117

S
cu-ius re - gni non e - rit fi - nis.

A
cu - ius re-gni non e-rit fi - nis. Et in Spi-ri-tum

T
ius re-gni non e - rit fi - nis.

B
gni, cu - ius re-gni non e-rit fi - nis.

123

S
Et in Spi-ri-tum San - ctum, Do

A
2 minims in ms
San - ctum Do - mi - num, (Et in Spi - ri -

T
Et in

B
Et in Spi - ri - tum

128

S
mi - num, et vi - vi - fi - can -

A
tum San-ctum, Do - - - mi-num,) et vi-vi - fi -

T
Spi - ri - tum San - ctum, Do - mi - num, et vi - vi - fi - can -

B
San-ctum, Do - mi - num,

132

S
- tem: qui ex Pa - tre Fi - li - o - que pro - ce - dit.

A
can - tem: qui ex Pa - tre Fi - li - o - que pro - ce - dit.

T
tem: qui ex Pa - tre Fi - li - o - que pro - ce - dit.

B
qui ex Pa - tre Fi - li - o - que pro - ce - dit. Qui

138

S
-

T
Qui cum Pa - tre et Fi - li - o si - mul a - do - ra - tur,

B
cum Pa - tre et Fi - li - o si - mul a - do - ra - tur, et

143

S
qui lo - cu - tus est per Pro - phe -

A
qui lo - cu - tus est per Pro - phe -

T
et con - glo - ri - fi - ca - tur: qui lo - cu - tus est per

B
con - glo - ri - fi - ca - tur: qui lo - cu - tus est per Pro -

149

S - tas. et a-pos -

A - tas. et a-pos -

T Pro - phe - tas. Et u - nam san - ctam ca - tho - li - cam

B phe - tas. Et u - nam san - ctam ca - tho - li - cam

154

S to - li - cam Ec - cle - si - am.

A to - li - cam Ec - cle - si - am.

T Con - fi - te - or u - num bap - tis - ma

B Con - fi - te - or u - num bap - tis - ma in re -

159

S Et ex - spec - to

A Et ex - pec -

T in re - mis - si - o - nem pec - ca - to - rum. Et ex -

B - mis - si - o - nem pec - ca - to - rum. Et ex - spec -

164

S re - sur - rec - ti - o - nem mor - tu - o - rum.

A to re - sur - rec - ti - o - nem mor - tu - o - rum.

T spec - to re - sur - rec - ti - o - nem mor - tu - o - rum.

B to re - sur - rec - ti - o - nem mor - tu - o - rum. Et

169

S Et vi - tam ven - tu - ri sae - cu - li.

A Et vi - tam ven - tu - ri sae - cu - li,

T Et vi - tem ven - tu - ri sae - cu - li.

B vi - tam ven - tu - ri sae -

174

S A - men, sae - cu - li A -

A sae - cu - li. A - men, sae - cu - li.

T A - men, sae - cu - li. A -

B - cu - li. A - men, sae - cu - li. A -

179

S
A
T
B

men.
A - men.
men.
men.

Detailed description: This musical score is for four voices: Soprano (S), Alto (A), Tenor (T), and Bass (B). It covers measures 179, 180, and 181. The key signature has three flats (B-flat, E-flat, A-flat), and the time signature is 8/8. The Soprano part begins with a treble clef and a key signature change from three flats to two flats (B-flat, E-flat) in measure 179. The Alto and Tenor parts begin with a treble clef and a key signature change from three flats to two flats in measure 180. The Bass part begins with a bass clef and a key signature change from three flats to two flats in measure 180. The lyrics are: Soprano: "men." (measure 181); Alto: "A - men." (measures 180-181); Tenor: "men." (measure 181); Bass: "men." (measure 181). A bracket above the Bass staff spans measures 180 and 181.

Barra - Missa Ecce panis angelorum_Sanctus

Transposed down a major third

Hotinet Barra

Mez

San - ctus, San -

T1

San - ctus, San - ctus,

T2

T3

Osanna only

B

Mez

- ctus, San -

T1

San -

Mez

- ctus, San - ctus San -

T1

- ctus, San - ctus, San -

T2

San -

B

San - ctus, San -

19

Mez
 - ctus Do - mi-nus De - - -

T1
 - ctus, Do - mi - nus De - us Sa - ba-oth,

T2
 - ctus, San - ctus, San -

B
 - ctus, Do - mi-nus De - - -

25

Mez
 - - - us

T1
 Sa - ba - oth San - ctus Do-mi -

T2
 ctus, San - - ctus Do-mi -

B
 us Sa - ba - oth, San - - - ctus Do -

31

Mez
 Do-mi - nus De - us Sa - - ba - oth

T1
 - nus De - us Sa - ba - oth,

T2
 - nus De - us Sa - ba-oth, Do - mi-nus De -

B
 mi - nus De - us Sa - - ba -

37

Mez Do - mi - nus De - us Sa - ba -

T1 Do - mi - nus De - us Sa - ba - oth, Do -

T2 - us Sa - *b in ms(=g)*

B - oth, Do - mi - nus

42

Mez oth, Do - mi - nus De - us Sa - ba - oth.

T1 - mi - nus De - us Sa - ba - oth.

T2 - ba - oth, Sa - ba - oth.

B De - us Sa - ba - oth.

47

Mez Ple - ni sunt cae -

T1 Ple - ni sunt cae -

53

Mez - li et - ter -

T1 li et ter - ra, et ter -

59

Mez
ra, ple - ni sunt cae - li et ter - ra ple - mi sunt cae -

T1
ra, le - ni sunt cae - li et ter-ra, ple - nisunt cae - li et

64

Mez
li et ter - ra, ple - nisunt cae - li et ter -

T1
ter - ra ple - ni sunt cae - li et ter-ra

70

Mez
ra glo - - ri-a tu - a, glo -

T1
glo - - - ri-a tu - a, glo -

75

Mez
- ri-a tu - a, glo - - ri-a tu -

T1
- ri-a tu - a, glo - - ri-a tu -

81

Mez
a. O - san - na, O - san - na,

T1
a. O - san - - - na, O - san -

T2
O san - na, O - san -

T3
O - san - na O -

B
O - san - na, O - san - na, O - san -

90

Mez
O - san - na, O - san - na in ex - cel -

T1
- na

T2
- - na, O - san - na in ex - cel -

T3
san - na

B
- na, O - san - na, O -

96 *a in ms(=f)*

Mez
 T1
 T2
 T3
 B

sis, O - san - na in ex - cel -
 sis, O - san - na in ex - cel - sis,
 O - san - na in ex - cel - sis,
 san - na in ex - cel - sis,

101

Mez
 T1
 T2
 T3
 B

sis, O - san - na in
 san - na in ex - cel - sis, O - san - na in ex - cel -
 sis, O -
 O - san - na in ex - cel - sis,
 O - san - na in ex -

106

Mez
ex - cel - sis, in ex - cel -

T1
- sis, O-san - na in ex-cel -

T2
- san-na in ex-cel - sis, O - san - na in ex - cel -

T3
O - san - na in

B
cel - sis, O - san - na in ex - cel -

112

Mez
sis. Be - ne - dic -

T1
sis. Be - ne - di - ctus, Be-ne -

T2
sis.

T3
ex-cel - sis.

B
sis. Be - ne - dic - tus, Be - ne - dic -


118


Mez  - tus qui ve -


T1  - dic - tus qui ve - - nit qui

B  - tus qui ve - - nit,


124


Mez  - nit


T1  ve - - nit, qui ve - -

B  qui ve - nit, qui ve -

131

Mez  in no-mi - ne Do - mi - ni, in

T1  - nit in no-mi - ne Do -

B  - nit

136

Mez  no-mi-ne Do - mi - ni,

T1  mi - ni, Do - mi - ni, in no-mi-ne

B  in no-mi-ne Do -

141

T1

Do - mi - ni, Do - mi - ni

B

- mi - ni, Do - mi - ni, Do - mi -

146

Mez

in no-mi - ne Do - mi -

T1

Do - mi - ni, in no-mi - ne Do - mi -

B

ni, Do - mi - ni, in no - mi - ne Do - mi - ni,

151

Mez

ni, in no-mi - ne Do - mi - ni, in no-mi - ne Do - mi -

T1

ni, in no - mi - ne Do - mi -

B

in no - mi - ne Do-mi - ni, in no - mi - ne Do-mi -

157

Mez

ni.

T1

ni. Osanna ut supra

B

ni.

Barra - Missa Ecce panis angelorum_Agnus Dei

Transposed down a major third

Hotinet Barra

Mez
T1
T2
B

8

Mez
T1
T2
B

13

Mez
T1
T2
B

A - gnus
A - gnus De - i, (A - gnus De -
A - gnus De - i, qui
gnus De - i,
De - i, qui tol - lis - pec - ca -
i,) qui tol - lis
tol - lis (qui tol - lis pec - ca - ta mun -
qui tol - lis pec - ca - ta mun -
- ta mun - di, pec - ca - ta mun - di,
(pec - ca - ta - mun -
- - di,)

17

Mez

di, (qui tol - lis pec - ca - ta mun - di:

T1

dotted breve in ms

(pec - ca - ta mun - di qui tol - lis pec - ca - ta

T2

di,) pec - ca - ta mun - - -

B

pec - ca - ta mun - - - di, (qui

22

Mez

qui tol - lis pec - ca - ta mun -

T1

mun - - - di, (qui tol - lis pec - ca -

T2

- di, (pec - ca - ta mun - di, qui tol - lis pec -

B

tol - lis pec - ca - ta mun - di, pec - ca - ta mun -

26

Mez
- - di:) mi - se - re - re no -
do - na no - bis pa -

T1
- ta mun - di: mi - se - re - re no -
do - na no - bis pa -

T2
ca - ta mun - di: mi -
do -

B
- - di, pec - ca - ta mun - di:)

31

Mez
bis,
cem, mi - se - re - re no - bis.
do - na no - bis pa - cem.

T1
bis, mi - se - re - re no - bis,) mi - se - re - re no - bis.
cem, do - na no - bis pa - cem,

T2
se - re - re no - bis, mi - se - re - re no - bis.
na no - bis pa - cem, do - na no - bis pa - cem.

B
mi - se - re - re no - bis, mi - se - re - re no - bis.
do - na no - bis pa - cem, do - na no - bis pa - cem.

36

Mez
A - gnus De -

T1
A - gnus De -

T2

B

43

Mez *i, qui tol - - - lis pec -*

T1 *- i, qui tol - lis (pec -*

49 *e in ms(=c)*

Mez *- ca - ta mun - di, (qui tol -*

T1 *- ca - ta mun - di, qui tol - lis pec - ca - ta*

54

Mez *lis pec - ca - ta mun - di, qui tol - lis pec - ca - ta mun -*

T1 *mun - di, pec - ca - ta mun - di, qui tol - lis pec - ca - ta*

59

Mez *- di, qui tol - lis pec - ca - ta mun -*

T1 *mun - di,) qui tol - lis pec - ca - ta mun -*

65

Mez *di: mi - se-re-re no - bis mi - se-re-re*

T1 *di: mi - se-re-re no - bis, mi - se-re-re no - -*

69

Mez *no - bis, mi - se - re - re no-bis, mi - se - re - re*

T1 *bis, mi - se - re - re no-bis, mi - se - re - re no - bis, mi - se - re -*

73

Mez

no - bis.

T1

- re no - bis.

Agnus Dei 1 ut supra