

Kyrie

David Joseph Stith

I



8



16



23



29




36



44



49



Gloria

David Joseph Stith

1

8

14

21

31

39

46

49

54

59

64 $\text{♩} = \text{♩}$

pizzicato

68

71

74

77 $\text{♩} = \text{♩}$

arco

81

99

104

122

127

134



139



152



158



164



171



176



182



186



Sanctus

David Joseph Stith



Kyrie

David Joseph Stith

II



9



16



23



29



37



44



48



Gloria

David Joseph Stith

II  Musical staff with various time signatures: C, 3/4, 2/4, C, 3/4, 2/4, C, 2/4, C. A fermata with a '2' above it is placed over the second measure of the final C time signature.

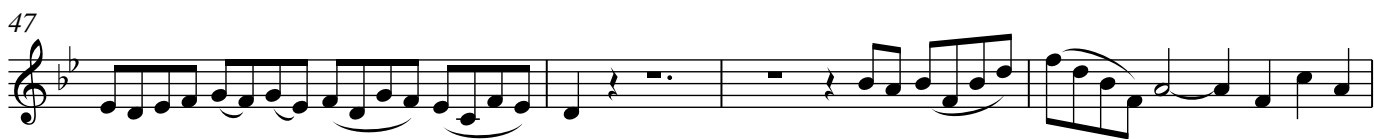
12  Musical staff starting at measure 12, featuring a melodic line with eighth and sixteenth notes.

19  Musical staff starting at measure 19, continuing the melodic line with various rhythmic patterns.

26  Musical staff starting at measure 26, featuring a melodic line with eighth and sixteenth notes.

32  Musical staff starting at measure 32, continuing the melodic line with eighth and sixteenth notes.

40  Musical staff starting at measure 40, featuring a melodic line with eighth and sixteenth notes. A dynamic marking 'd = d' is present above the staff.

47  Musical staff starting at measure 47, featuring a melodic line with eighth and sixteenth notes.

51  Musical staff starting at measure 51, continuing the melodic line with eighth and sixteenth notes.

56  Musical staff starting at measure 56, featuring a melodic line with eighth and sixteenth notes.

61  Musical staff starting at measure 61, continuing the melodic line with eighth and sixteenth notes.

65 $\text{♩} = \text{♩}$

pizzicato

69

72

75

78 $\text{♩} = \text{♩}$

arco

83

106

122

131

137

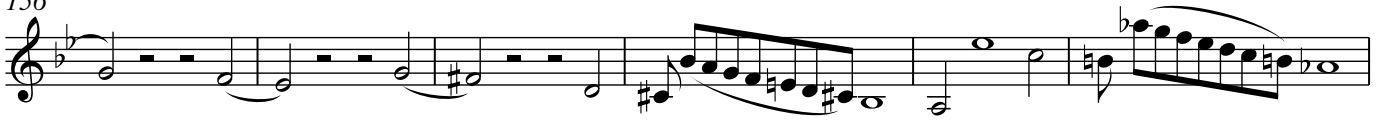
143



150



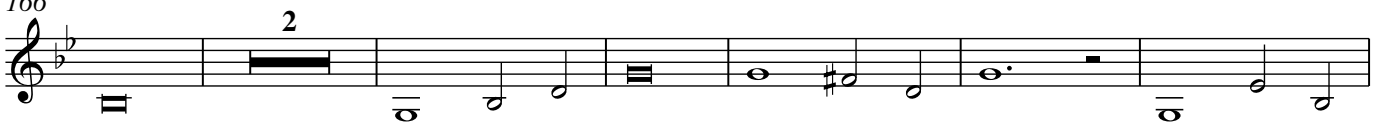
156



162



166



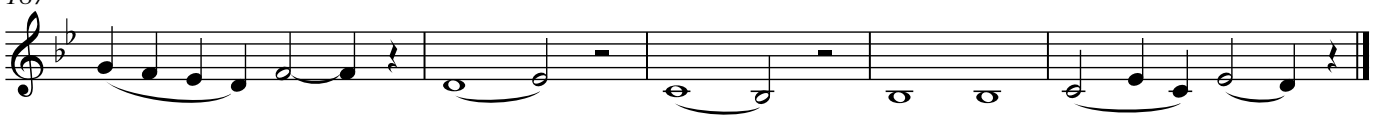
174



182



187



Sanctus

David Joseph Stith

The image shows the first six measures of a musical score for the piece "Sanctus" by David Joseph Stith. The score is written on two staves in a single system. The first staff begins with a double bar line and a Roman numeral "II", indicating the start of the second system. Both staves are in the key of B-flat major (one flat) and 4/4 time. The first staff contains measures 1 through 5, and the second staff contains measures 6 through 10. The music features a variety of rhythmic values, including quarter, eighth, and sixteenth notes, as well as rests and ties. A triplet of eighth notes is marked with a "3" and a slur in measure 10. The piece concludes with a double bar line at the end of measure 10.

Kyrie

David Joseph Stith

Basso

First musical staff for Bass, measures 1-8. The staff is in bass clef, key of B-flat major (one flat), and 3/4 time. It begins with two measures of whole rests, followed by a melodic line of eighth and quarter notes with some slurs.

9

Second musical staff for Bass, measures 9-16. Continuation of the melodic line from the previous staff, featuring eighth and quarter notes with slurs.

17

Third musical staff for Bass, measures 17-23. Continuation of the melodic line, including a measure with a whole rest.

24

Fourth musical staff for Bass, measures 24-29. Continuation of the melodic line, featuring a chromatic descent in measure 28.

30

Fifth musical staff for Bass, measures 30-36. Continuation of the melodic line, including a chromatic ascent in measure 31.

37

Sixth musical staff for Bass, measures 37-44. Continuation of the melodic line, featuring a wide intervallic leap in measure 38.

45

Seventh musical staff for Bass, measures 45-48. Continuation of the melodic line, including a measure with a whole rest.

49

Eighth musical staff for Bass, measures 49-56. Continuation of the melodic line, ending with a double bar line.

Gloria

David Joseph Stith

Basso continuo

Chords: B \flat , B \flat , F, F, B \flat , E \flat , B \flat , F, B \flat , F, B \flat

13

Chords: Gm, Gm Cm, Gm Cm6, Gm Cm, D, Gm D, Gm F, B \flat , B \flat , E \flat

25

Chords: E \flat , B \flat , F, B \flat , E \flat , B \flat , F, B \flat , F, Gm, F, Gm, F, E \flat

35

Chords: F, Gm, F, B \flat , E \flat , F7, B \flat , A \flat , B \flat , E \flat , A \flat , B \flat 7, E \flat , B \flat , B \flat , E \flat , F, B \flat , F, B \flat

46

Chords: B \flat , F, F, Cm, Cm, B \flat , B \flat

56

Chords: E \flat , E \flat , B \flat , B \flat , F, F, B \flat

66

Chords: B \flat , F7, F

pizzicato

70

Chords: B \flat , B \flat , E \flat

73

Chords: E \flat m, B \flat , F

76

Chords: B \flat , E \flat , B \flat , F, B \flat

79

Chords: D7, Gm, Cm, Gm, D7, Gm, Cm6, D, Gm6, D, Gm, Cm

arco

86 G Cm G Gm D Gm Cm

91 Gm D Gm Cm D Gm

95 Cm6 D7 Gm Ab D7

98 Gm Eb A D Cm D Edim Ebdim7 Am A7

102 D Gm Cm Gm Cm Cm6 Gm D Gm Cm D Gm Eb7 Edim Edim7 D Bb

111 F7 Bb F7 Bb

115 Cm F F7 Bb Cm

119 Cm6 D D7 Gm Cm D7

123 Eb6 Eb7 Gm Eb6 Edim A7 Gm Dsus7 D7 Gm Fm Fm

128 G Fm Fm G Ab Ab

132 G7 Ab Ab G7 Bb7 Eb G7

136 Ab Dbmaj7 G Ab7 G

140 Fm B \flat E \flat Fm6 B \flat 7 E \flat Gm

145 D7 Gm D7 Gm

149 Cm6 D D7 Gm Cm F

153 B \flat E \flat Am7 D Gm D7 Gm Dm

157 Cm Gm D D7 Edim7 E \flat 7 D D7

161 G G7 Cm E \flat 6 F F7 B \flat Gm D D7 Gm

168 Gm Gm Cm Gm

172 Cm6 D7 Gm Cm7 Cm6 Gdim D A7 Dm Edim

177 Dm EdimDm E \flat B \flat E \flat B \flat

180 Gm A Dm E \flat B \flat 6 D Gm

184 $\text{♩} = \text{♩}$

Sanctus

David Joseph Stith

Basso Continuo

B \flat E \flat Cm F B \flat E \flat B \flat Gm Cm F E \flat m E \flat m F B \flat E \flat Cm F

5 Dm Gm F B \flat 7 A \flat m A \flat m E \flat E \flat Cm F B \flat F7 Gm F Gm F Gm F Gm Cm F7 B \flat