

Claudio Monteverdi (1567 – 1643)

Vesperae Beatae Virginis

TROMBONE III (TROMBONE DOPPIO UND BC)

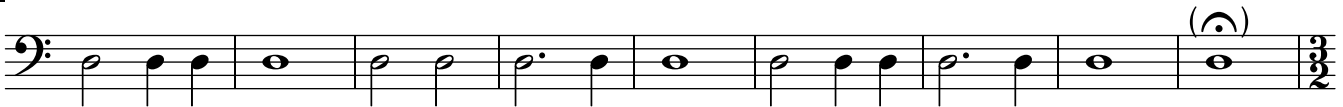
Domine ad adiuvandum



9



16



25



33



42



51



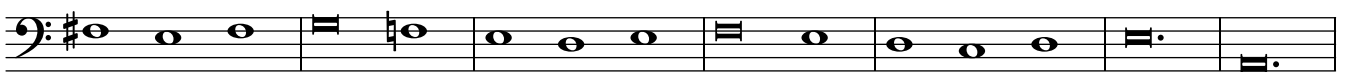
Dixit Dominus



7



15



22



31



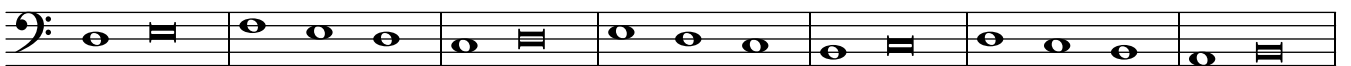
39



48



56



63



70

Ritornello

76

84

91

96

Ritornello

103

112

120

127

138

Nigra sum



6



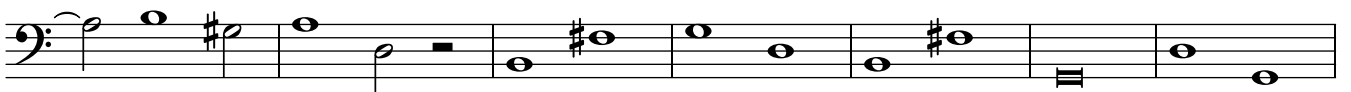
12



17



22



29



34



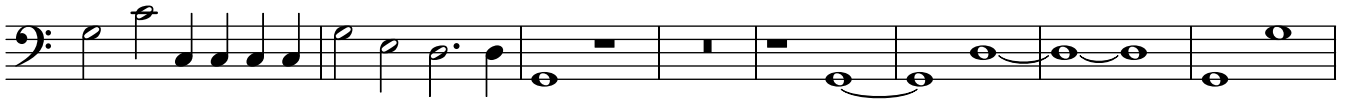
Laudate pueri Dominum



6



12



20



27



34



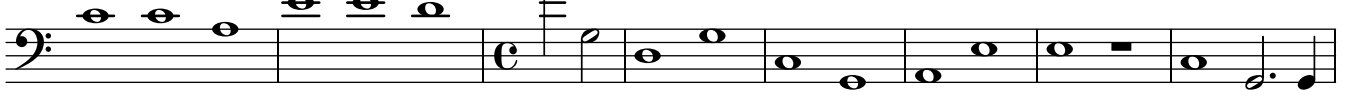
41



48



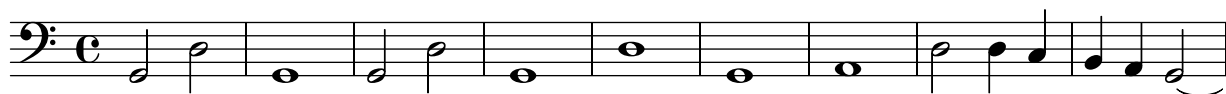
55



63



Pulchra es



10



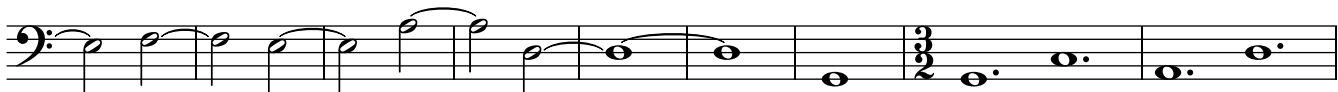
19



29



39



48



57



68



75



Laetatus sum



5



9



16



21



25



32



39



46



51



55



61



67



71



76



84



89



93



98



105



112



Duo seraphim



[12]



[24]



[34]



[43]



[54]



[66]



[77]



[87]



Nisi Dominus



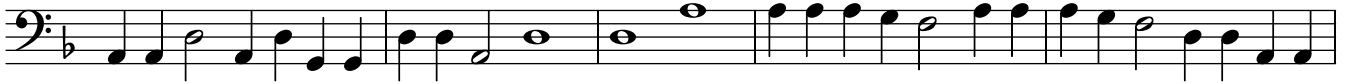
7



14



21



26



31



36



41



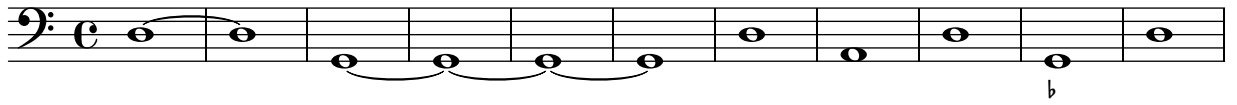
45



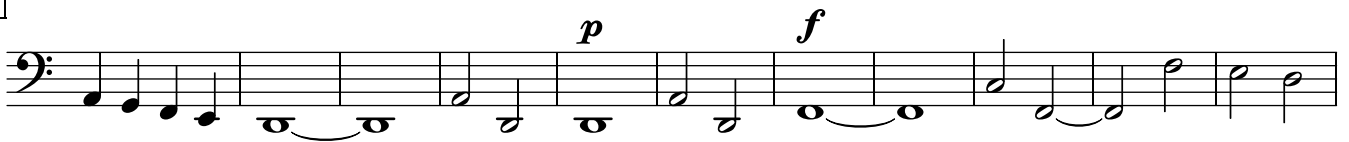
50



Audi caelum



12



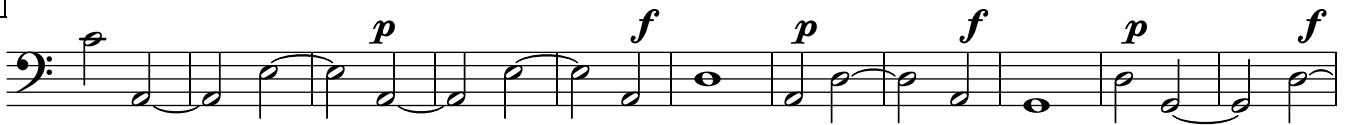
23



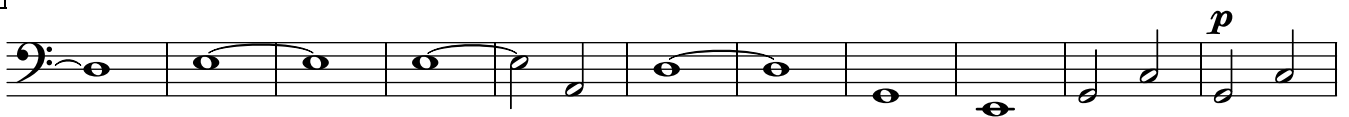
34



45



56



67



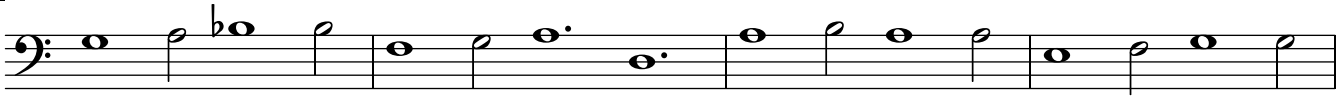
77



87



91



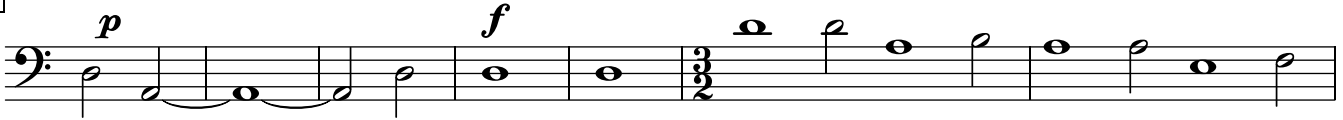
95



102



113



120



124



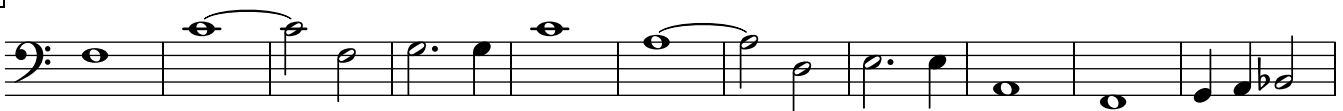
129



139



150



161



36



41



45



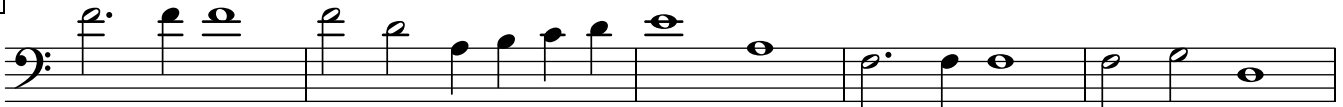
49



54



60



65



72



78



Sonata sopra Sancta Maria



10



19



27



35

Trombone I

32

76

18 Cantus

103



112

4 4 2 Violino I

Ave maris stella



7



12



Sumens illud ave



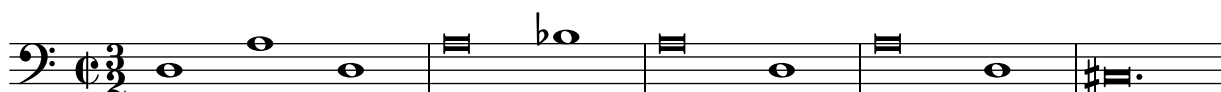
7



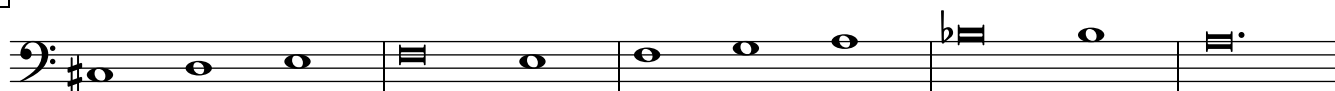
14



Ritornello



6



11



16



Solve vincla reis

ut *Sumens illud ave.*

Ritornello

Monstra te

7



14



Ritornello

Virgo singularis

ut *Monstra te.*

Ritornello

Vitam praesta

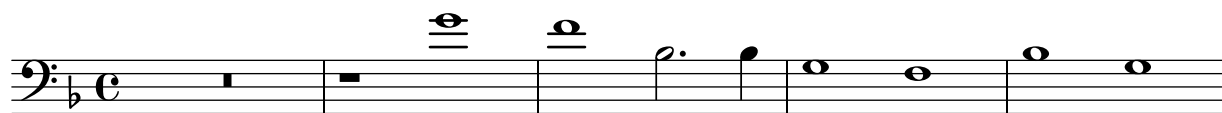
ut *Monstra te.*

Sit laus deo

ut *Ave maris stella.*

Magnificat a 7

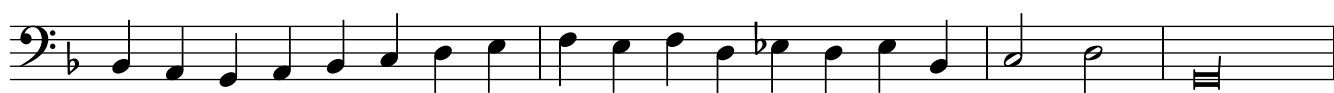
Magnificat



6



10



Et exultavit



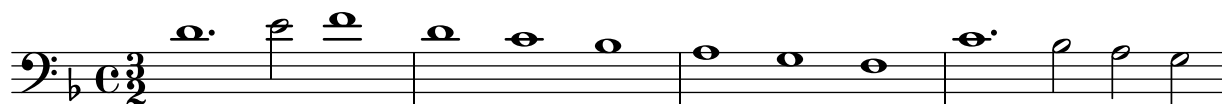
9

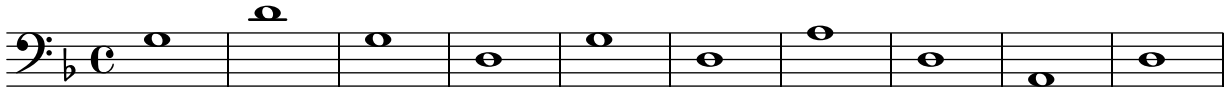


18



Quia respexit



Quia fecit

11



22

**Et misericordia**

5



10



14



19



24



Fecit potentiam

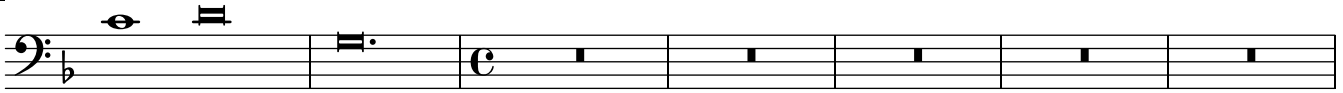
Musical score for 'Fecit potentiam' in bass clef, 3/2 time signature, and one flat. The score consists of seven staves, each starting with a measure number in a box: 5, 10, 15, 20, 26, 31, and 36. The music features a variety of note values including quarter, eighth, and sixteenth notes, as well as rests and dynamic markings.

Deposuit potentes

Musical score for 'Deposuit potentes' in bass clef, common time signature, and one flat. The score consists of three staves, each starting with a measure number in a box: 11, 16, and 21. The music features a variety of note values including quarter, eighth, and sixteenth notes, as well as rests and dynamic markings.

Esurientes implevit bonis

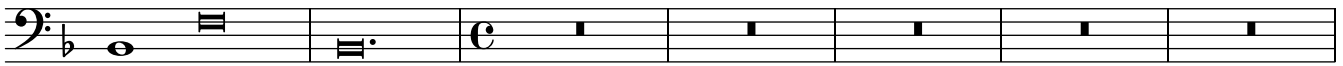
5



12



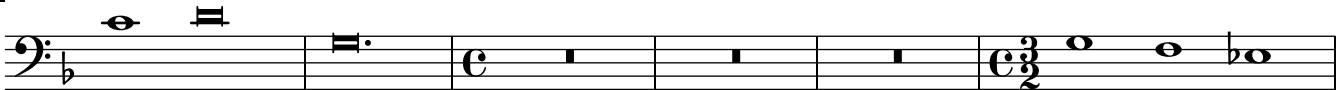
17



24



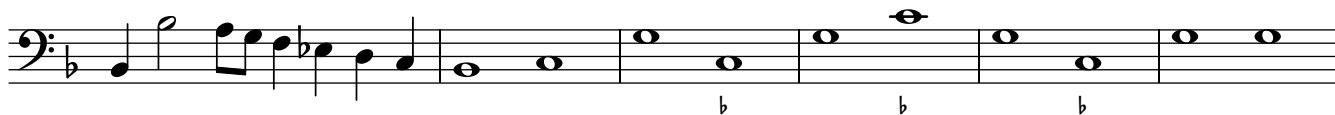
29



35

**Suscepit Israel**

5



11

**Sicut locutus est**

4



7



11



15



Gloria Patri

10

20

29

Detailed description: This section contains the musical notation for the 'Gloria Patri' section, measures 10 through 29. It consists of four staves of music in bass clef with a common time signature (C). The first staff (measures 10-19) features a series of eighth notes with a slur, starting on G2 and moving up to G3. The second staff (measures 20-28) continues with eighth notes, including some with accidentals (flats) and a double bar line at the end. The third staff (measures 29-28) shows a continuation of the eighth-note pattern, ending with a double bar line. The fourth staff (measures 29-28) shows a continuation of the eighth-note pattern, ending with a double bar line.

Sicut erat

7

14

20

27

31

Detailed description: This section contains the musical notation for the 'Sicut erat' section, measures 7 through 30. It consists of five staves of music in bass clef with a common time signature (C). The first staff (measures 7-13) features a series of eighth notes with a slur, starting on G2 and moving up to G3. The second staff (measures 14-19) continues with eighth notes, including some with accidentals (flats) and a double bar line at the end. The third staff (measures 20-26) shows a continuation of the eighth-note pattern, ending with a double bar line. The fourth staff (measures 27-30) shows a continuation of the eighth-note pattern, ending with a double bar line. The fifth staff (measures 31-30) shows a continuation of the eighth-note pattern, ending with a double bar line.