

Basse Continue

Marc-Antoine Charpentier
(1672)

Messe

a 8 voix et 8 violons et flutes (H.3)

1. Kyrie

Prelude devant le Kyrie

tous [basses de] viol.[ons] bassons et org.[ue]



6

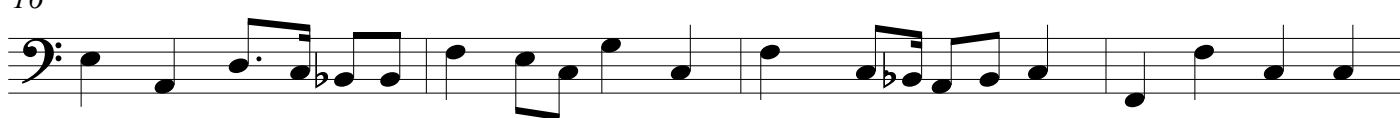


11

orgue et basse continu



16



20



*Icy lorgue joïe un couplet si lon veut
ou sil ny a point dorgue il faudra joïer quelque simphonie
Passez apres le couplet de lorgue au christe*

25

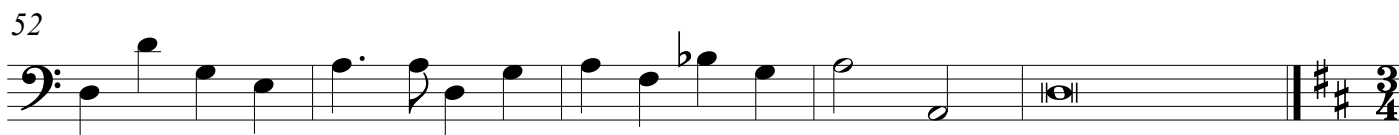
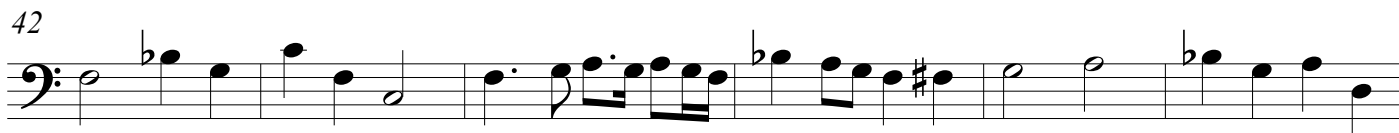


30



36

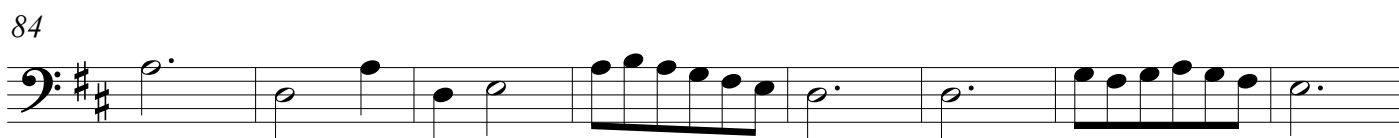
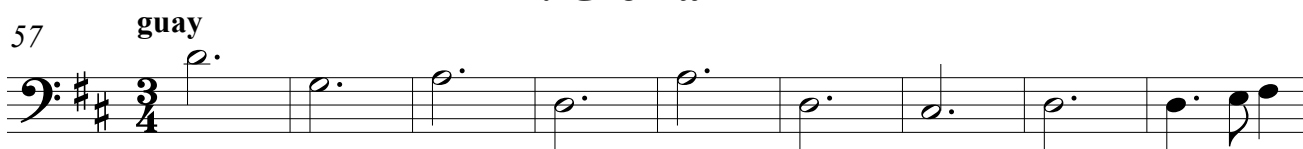




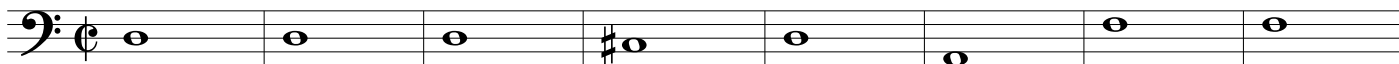
*Icy lorgue joue un couplet sur les petit jeux si lon veut
apres lequel les violons recomencent le Prelude du Kyrie
et les voix reprenent en suite le Kyrie comme cydevant
lorgue finit ou quelque simphonie*

*Le Celebrant
entonne Gloria
in Excelsis deo*

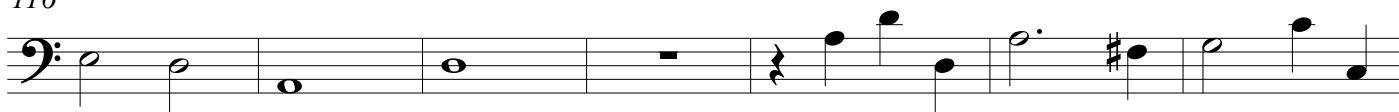
2. Gloria



faites icy un grand silence puis passez au chœur suivant

108 *acc.[ompagnement] seul*

116



123

129 *acc.[ompagnement] seul*

137



144



151

159 *accomp[agnements] seuls*

166



173



5

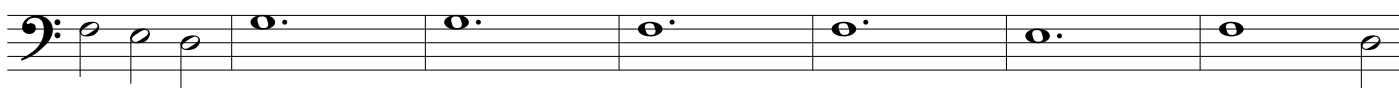
180



187



194



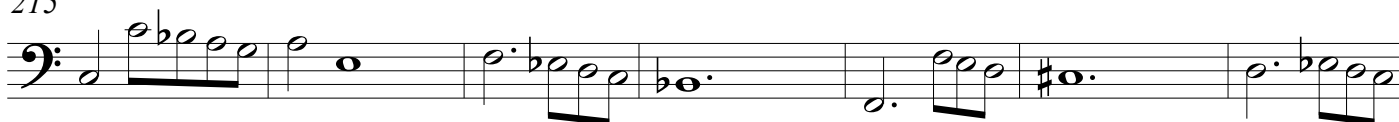
201



208



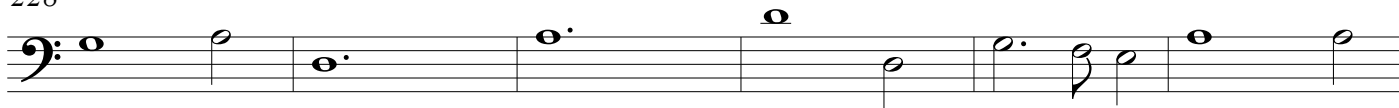
215



222



228



234



240



246 [tous]

[tous]



Musical notation for the bass line of 'The Rose Tree'. The melody is written on a single staff with a bass clef. The notes are: G2 (half note), F2 (half note), E2 (half note), D2 (half note), C2 (half note), B1 (half note), A1 (half note), and G1 (half note). The key signature has one flat (Bb), and the time signature is 4/4.

The musical notation for Example 6-10 is written on a single bass staff. It begins with a common time signature 'C'. The notes are as follows:

Musical Notation	Pitch Class
G ₂	G2
A ₂ (quarter note)	A2
B ₂ (quarter note)	B2
C ₃ (half note)	C3
D ₃ (half note)	D3
E ₃ (half note)	E3
F ₃ (half note)	F3
G ₃ (half note)	G3

[illegible]

The bass line of 'The Rose Tree' is written on a single staff in bass clef. It consists of the following notes: C2 (whole note), D2 (half note), E2 (quarter note), F2 (quarter note), G2 (half note), A2 (half note), B2 (quarter note), C3 (quarter note), D3 (half note), E3 (half note), F3 (quarter note), G3 (quarter note), A3 (half note), B3 (half note), and C4 (whole note). The melody is simple and follows the natural scale of the song.

[illegible]

Suivez a laize

A musical staff in bass clef showing the bass line of the song. The melody consists of eighth and quarter notes, with some notes beamed together. The key signature has one flat (B-flat).

[illegible]



Le prestre entonne
Credo in unum deum

3. Credo

397 [tous]



405



414



422



428 acc[ompagnement] seul



436



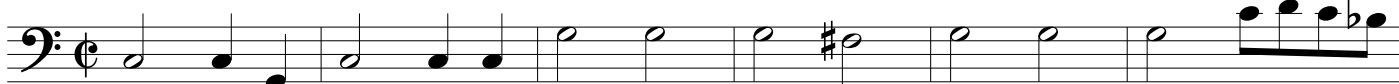
443

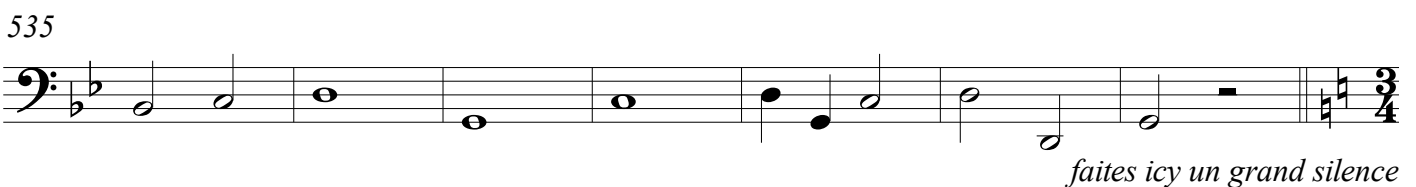
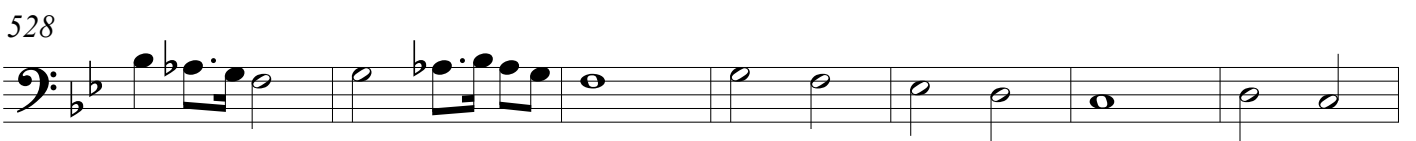
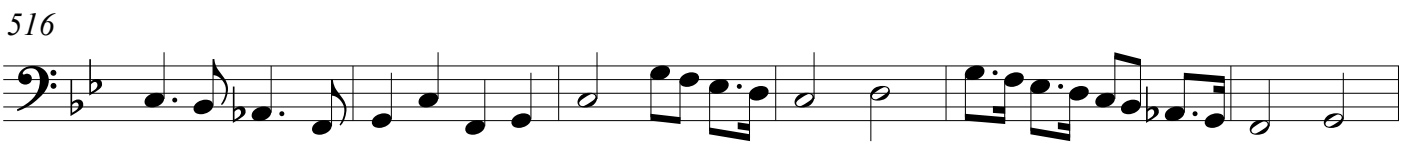
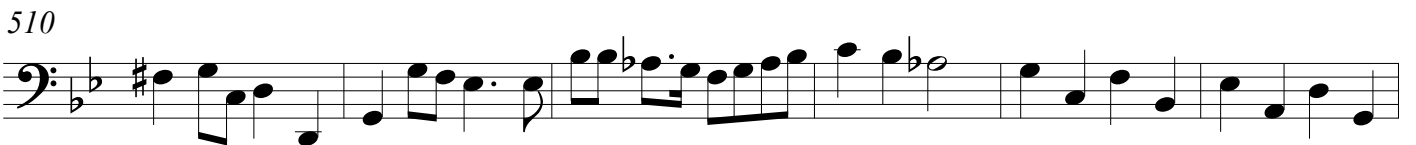
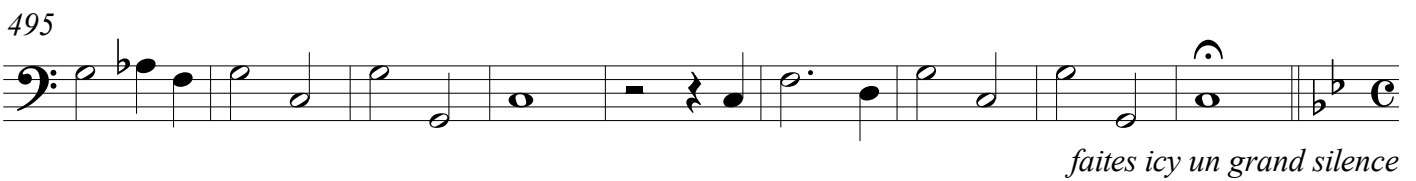
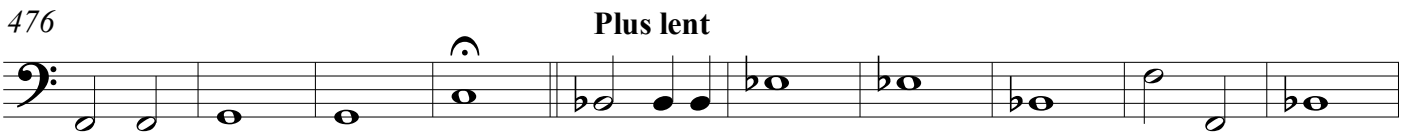


453



463





542 **guay**

549



556



564



573



582



591



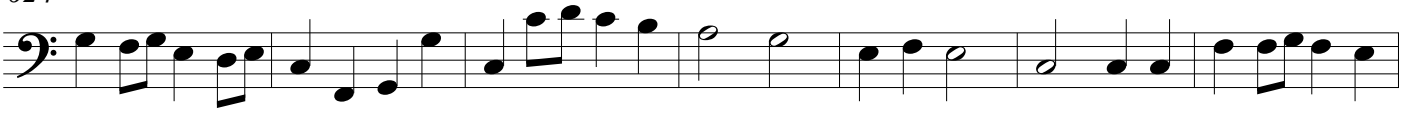
600



609

Lentement618 **Allegro**

624



631



639



648



655



663



670



678



686



694

*Suivez au chœur sans grande interruption*

The first staff of music is written in bass clef with a 3/2 time signature. It contains a sequence of notes: a dotted quarter note (G2), an eighth note (A2), a quarter note (B2), a dotted quarter note (C3), an eighth note (B2), a quarter note (A2), a dotted quarter note (G2), an eighth note (F2), a quarter note (E2), a dotted quarter note (D2), an eighth note (C2), and a quarter note (B1).

A musical staff in bass clef showing the bass line of the song. The melody consists of eighth and quarter notes, with some beamed eighth notes. The notes are: G2, A2, B2, C3, D3, E3, F3, G3, A3, B3, C4, D4, E4, F4, G4, A4, B4, C5, D5, E5, F5, G5, A5, B5, C6, D6, E6, F6, G6, A6, B6, C7, D7, E7, F7, G7, A7, B7, C8, D8, E8, F8, G8, A8, B8, C9, D9, E9, F9, G9, A9, B9, C10, D10, E10, F10, G10, A10, B10, C11, D11, E11, F11, G11, A11, B11, C12, D12, E12, F12, G12, A12, B12, C13, D13, E13, F13, G13, A13, B13, C14, D14, E14, F14, G14, A14, B14, C15, D15, E15, F15, G15, A15, B15, C16, D16, E16, F16, G16, A16, B16, C17, D17, E17, F17, G17, A17, B17, C18, D18, E18, F18, G18, A18, B18, C19, D19, E19, F19, G19, A19, B19, C20, D20, E20, F20, G20, A20, B20, C21, D21, E21, F21, G21, A21, B21, C22, D22, E22, F22, G22, A22, B22, C23, D23, E23, F23, G23, A23, B23, C24, D24, E24, F24, G24, A24, B24, C25, D25, E25, F25, G25, A25, B25, C26, D26, E26, F26, G26, A26, B26, C27, D27, E27, F27, G27, A27, B27, C28, D28, E28, F28, G28, A28, B28, C29, D29, E29, F29, G29, A29, B29, C30, D30, E30, F30, G30, A30, B30, C31, D31, E31, F31, G31, A31, B31, C32, D32, E32, F32, G32, A32, B32, C33, D33, E33, F33, G33, A33, B33, C34, D34, E34, F34, G34, A34, B34, C35, D35, E35, F35, G35, A35, B35, C36, D36, E36, F36, G36, A36, B36, C37, D37, E37, F37, G37, A37, B37, C38, D38, E38, F38, G38, A38, B38, C39, D39, E39, F39, G39, A39, B39, C40, D40, E40, F40, G40, A40, B40, C41, D41, E41, F41, G41, A41, B41, C42, D42, E42, F42, G42, A42, B42, C43, D43, E43, F43, G43, A43, B43, C44, D44, E44, F44, G44, A44, B44, C45, D45, E45, F45, G45, A45, B45, C46, D46, E46, F46, G46, A46, B46, C47, D47, E47, F47, G47, A47, B47, C48, D48, E48, F48, G48, A48, B48, C49, D49, E49, F49, G49, A49, B49, C50, D50, E50, F50, G50, A50, B50, C51, D51, E51, F51, G51, A51, B51, C52, D52, E52, F52, G52, A52, B52, C53, D53, E53, F53, G53, A53, B53, C54, D54, E54, F54, G54, A54, B54, C55, D55, E55, F55, G55, A55, B55, C56, D56, E56, F56, G56, A56, B56, C57, D57, E57, F57, G57, A57, B57, C58, D58, E58, F58, G58, A58, B58, C59, D59, E59, F59, G59, A59, B59, C60, D60, E60, F60, G60, A60, B60, C61, D61, E61, F61, G61, A61, B61, C62, D62, E62, F62, G62, A62, B62, C63, D63, E63, F63, G63, A63, B63, C64, D64, E64, F64, G64, A64, B64, C65, D65, E65, F65, G65, A65, B65, C66, D66, E66, F66, G66, A66, B66, C67, D67, E67, F67, G67, A67, B67, C68, D68, E68, F68, G68, A68, B68, C69, D69, E69, F69, G69, A69, B69, C70, D70, E70, F70, G70, A70, B70, C71, D71, E71, F71, G71, A71, B71, C72, D72, E72, F72, G72, A72, B72, C73, D73, E73, F73, G73, A73, B73, C74, D74, E74, F74, G74, A74, B74, C75, D75, E75, F75, G75, A75, B75, C76, D76, E76, F76, G76, A76, B76, C77, D77, E77, F77, G77, A77, B77, C78, D78, E78, F78, G78, A78, B78, C79, D79, E79, F79, G79, A79, B79, C80, D80, E80, F80, G80, A80, B80, C81, D81, E81, F81, G81, A81, B81, C82, D82, E82, F82, G82, A82, B82, C83, D83, E83, F83, G83, A83, B83, C84, D84, E84, F84, G84, A84, B84, C85, D85, E85, F85, G85, A85, B85, C86, D86, E86, F86, G86, A86, B86, C87, D87, E87, F87, G87, A87, B87, C88, D88, E88, F88, G88, A88, B88, C89, D89, E89, F89, G89, A89, B89, C90, D90, E90, F90, G90, A90, B90, C91, D91, E91, F91, G91, A91, B91, C92, D92, E92, F92, G92, A92, B92, C93, D93, E93, F93, G93, A93, B93, C94, D94, E94, F94, G94, A94, B94, C95, D95, E95, F95, G95, A95, B95, C96, D96, E96, F96, G96, A96, B96, C97, D97, E97, F97, G97, A97, B97, C98, D98, E98, F98, G98, A98, B98, C99, D99, E99, F99, G99, A99, B99, C100, D100, E100, F100, G100, A100, B100, C101, D101, E101, F101, G101, A101, B101, C102, D102, E102, F102, G102, A102, B102, C103, D103, E103, F103, G103, A103, B103, C104, D104, E104, F104, G104, A104, B104, C105, D105, E105, F105, G105, A105, B105, C106, D106, E106, F106, G106, A106, B106, C107, D107, E107, F107, G107, A107, B107, C108, D108, E108, F108, G108, A108, B108, C109, D109, E109, F109, G109, A109, B109, C110, D110, E110, F110, G110, A110, B110, C111, D111, E111, F111, G111, A111, B111, C112, D112, E112, F112, G112, A112, B112, C113, D113, E113, F113, G113, A113, B113, C114, D114, E114, F114, G114, A114, B114, C115, D115, E115, F115, G115, A115, B115, C116, D116, E116, F116, G116, A116, B116, C117, D117, E117, F117, G117, A117, B117, C118, D118, E118, F118, G118, A118, B118, C119, D119, E119, F119, G119, A119, B119, C120, D120, E120, F120, G120, A120, B120, C121, D121, E121, F121, G121, A121, B121, C122, D122, E122, F122, G122, A122, B122, C123, D123, E123, F123, G123, A123, B123, C124, D124, E124, F124, G124, A124, B124, C125, D125, E125, F125, G125, A125, B125, C126, D126, E126, F126, G126, A126, B126, C127, D127, E127, F127, G127, A127, B127, C128, D128, E128, F128, G128, A128, B128, C129, D129, E129, F129, G129, A129, B129, C130, D130, E130, F130, G130, A130, B130, C131, D131, E131, F131, G131, A131, B131, C132, D132, E132, F132, G132, A132, B132, C133, D133, E133, F133, G133, A133, B133, C134, D134, E134, F134, G134, A134, B134, C135, D135, E135, F135, G135, A135, B135, C136, D136, E136, F136, G136, A136, B136, C137, D137, E137, F137, G137, A137, B137, C138, D138, E138, F138, G138, A138, B138,

The bass line of 'The Rose Tree' is written in 3/4 time on a single staff. It begins with a C2 whole note, followed by a B1 half note and an A1 quarter note. The melody continues with a G1 quarter note, an F1 half note, and an E1 quarter note. The piece concludes with a D1 whole note.

A musical score for a single instrument, likely a cello or double bass, in G major. The key signature has one sharp (F#). The time signature is common time (C). The melody consists of two measures. The first measure contains a half note G2, a quarter note A2, a dotted half note B2, and a quarter note C3. The second measure contains a half note D3, a quarter note E3, a dotted half note F#3, and a quarter note G3. The notes are written on a five-line staff with a bass clef.

The musical notation for the bass staff shows the following notes and rests across measures:

- Measure 1: Quarter rest, quarter note G₂.
- Measure 2: Quarter note F₂, quarter note E₂.
- Measure 3: Quarter note D₂, quarter note C₂.
- Measure 4: Quarter note B₁, quarter note A₁.
- Measure 5: Quarter note G₁, quarter note F₁.
- Measure 6: Quarter note E₁, quarter note D₁.
- Measure 7: Quarter note C₁, quarter note B₀.
- Measure 8: Quarter note A₀, quarter note G₀.

The bass line of 'The Rose Tree' is written on a single staff in bass clef. The melody consists of the following notes: G2 (half note), A2 (quarter note), B2 (quarter note), C3 (quarter note), D3 (quarter note), E3 (quarter note), F3 (quarter note), G3 (quarter note), A3 (quarter note), B3 (quarter note), C4 (half note), and D4 (half note). The piece ends with a double bar line and a repeat sign.

The bass line is written on a single staff with a bass clef. It consists of seven measures. The first measure has a whole note G2. The second measure has a whole note G2. The third measure has a whole note G2. The fourth measure has a whole note G2, which is tied to the fifth measure's whole note G2. The sixth measure has a whole note G2. The seventh measure has a whole note G2. The piece ends with a double bar line and a repeat sign.

765



770



778



786



794



801



808



815



icy lon jouera un offertoire comme on voudra

4. Sanctus

822 **Pr. Sanctus**

2

829

835

841

848 **Second Sanctus**

855

861

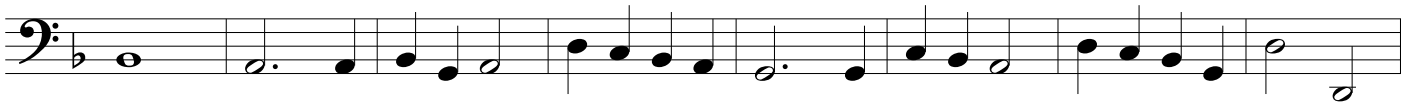
867

Troisième Sanctus

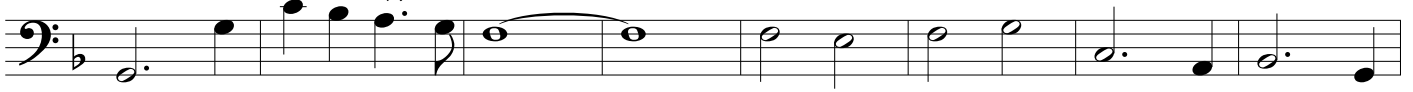
873 *orgue et basse continue*

873

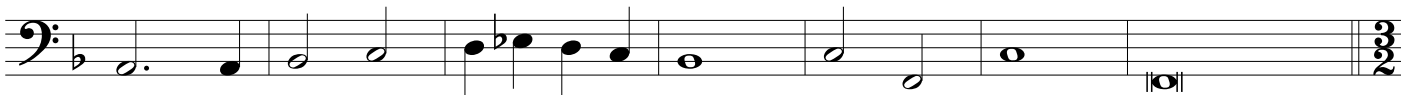
881



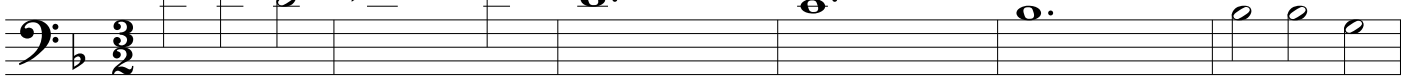
889



897

*Passez a laize a la suite*

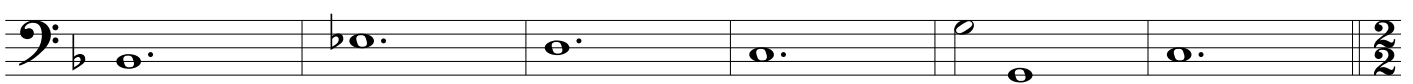
904



910



916



922



929



936



943

*Passez a l'O Salutaris Pour LElevation
sinon on chantera quelque autre motet*

5. Elevation

950



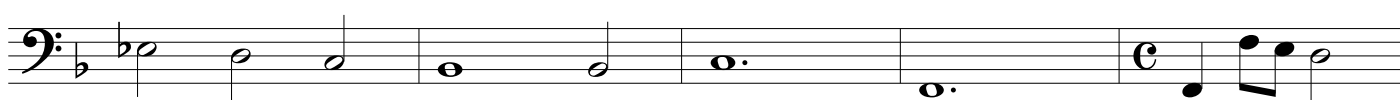
956



962



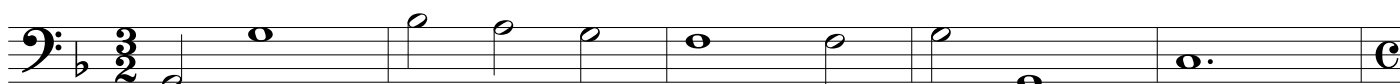
968



973



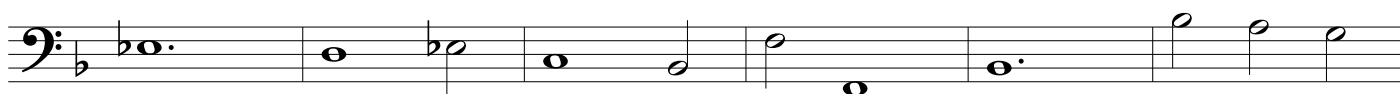
977



982



987

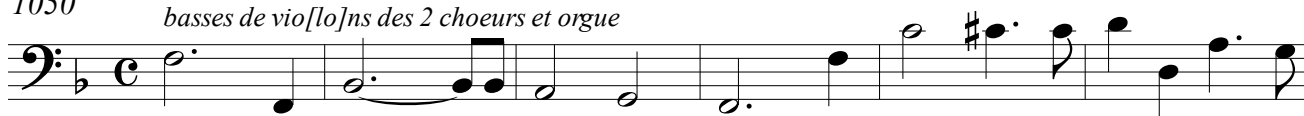


993



7. Agnus Dei

1050 **Pr. Agnus Dei**
basses de vio[lo]ns des 2 chœurs et orgue



1056



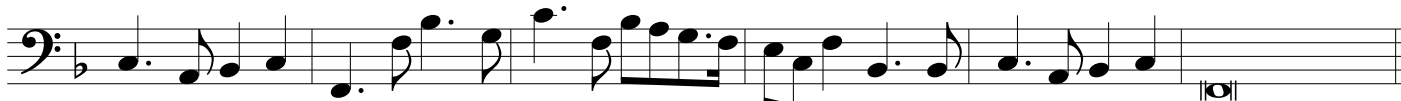
1062



1068



1074



Suivez a laize

1080 **Second Agnus Dei**



1085



1090



1095



1100



1105



*La symphonie de devant L'Agnus Dei
se recommencera pour troisieme couplet*

8. Domine Salvum

Prelude pour le Domine salvum dela Messe a 8

1110 *orgue et [basses de] vio[lo]ns*



1116



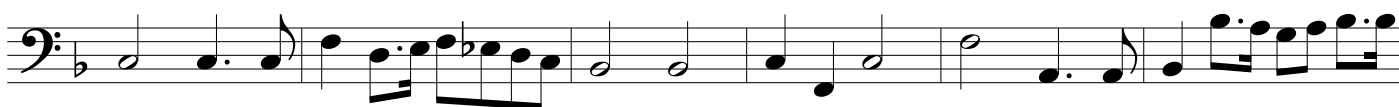
1121



1127



1133



1139



1145



1151



1157



1163



1168



1173



1178



*Fin de la Messe
a 8 voix et 8 Instruments*