

MAGNIFICAT

Vesperae longiores

Magnificat

Agni ficat :/: :/: a- nima mea Dominum
& exulta- vit spiritus meus in Deo salu tari me o

Heinrich Ignaz von Biber
1644 - 1704

Violin 1

Violin 2

Viola 1

Viola 2

Soprano

Alto

Tenor

Bass

BC

Solo

Mag - ni - fi - cat, mag - ni - fi - cat, mag - ni - fi - cat a - ni - ma me - a

6 6 5 6 7

Source: Vesperae longiores ac breviores una cum litanis Lauretanis,
Edition Johann Baptist Mayr, Salzburg, M DC XCIII.

Biber - Magnificat

3

Vln. 1

Vln. 2

Vla. 1

Vla. 2

S

A

T

B

BC

Do - mi-num. Et ex - ul - ta - - - - - vit spi - ri - tus me - us in

6 6 4 6

5

Vln. 1

Vln. 2

Vla. 1

Vla. 2

S

A

T

B

BC

Solo

Qui - a re - spe - xit hu - mi - li - ta - tem an - chil - lae su - ae,

De - o sa - lu - ta - ri - me - o.

6 5 6 6 6 5 6 6

Biber - Magnificat

7

Vln. 1

Vln. 2

Vla. 1

Vla. 2

S

ec-ce e-nim ex hoc, ec-ce e-nim ex hoc be-a-ta-m me

A

T

B

BC

6 6 6 6 4 2 #

9

Vln. 1

Vln. 2

Vla. 1

Vla. 2

S

di-cent om-nes ge-ne-ra-ti-o-nes.

A

T

Solo

Qui-a fe-cit mi-hi mag-na qui po-tens, qui po-

B

BC

6 5 6 6 5 4 # 6 6 # 6

Biber - Magnificat

11

Vln. 1

Vln. 2

Vla. 1

Vla. 2

S

A

T
tensest et sanc-tum no - men, et sanc-tum no - men, et sanc-tum no-men e -

B

BC
#3 6 6 7 3 4 \flat 3 $\frac{7}{3}$ $\frac{6}{4}$ $\frac{5}{3}$

13

Vln. 1

Vln. 2

Vla. 1

Vla. 2

S
Et mi - se - ri - cor - - - - - di - a e - ius, mi - se - ri - cor - - - - - di - a

A
Et mi - se - ri - cor - - - - - di - a mi - se - ri - cor - - - - - di - a

T
ius. Et mi - se - ri - cor - - - - - di - a

B

BC
3 3 3 3 3 3 3 #6

Biber - Magnificat

15

Vln. 1

Vln. 2

Vla. 1

Vla. 2

S
e - ius a pro - ge - ni - e in pro - ge - ni - es ti - men - - - ti - bus e - um.

A
e - ius a pro - ge - ni - e in pro - ge - ni - es ti - men - - - ti - bus e - um.

T
e - ius a pro - ge - ni - e in pro - ge - ni - es ti - men - - - ti - bus e - um.

B

BC

6 4# 6 b 6/5 4 3

17

Vln. 1

Vln. 2

Vla. 1

Vla. 2

S
Tutti
Fe - cit po - ten - ti - am, po - ten - ti - am in bra - - - - - chi - o

A
Tutti
Fe - cit po - ten - ti - am, po - ten - ti - am in bra - - - - -

T
Tutti
Fe - cit po - ten - ti - am, po - ten - ti - am

B
Tutti
Fe - cit po - ten - ti - am, po - ten - ti - am in

BC

1 1 1 3 2 2 3

Biber - Magnificat

19

Vln. 1
Vln. 2
Vla. 1
Vla. 2
S
A
T
B
BC

in bra - chi - o su - o, in bra - - - - -
chi - o su - o, in bra - chi - o, in bra - - - - - chi - o,
in bra - - - - - chi - o su - o,
bra - - - - - chi - o su - o, in

6 6 5 5 6 # 6 6 6

21

Vln. 1
Vln. 2
Vla. 1
Vla. 2
S
A
T
B
BC

chio, in bra - chi - o su - o. Dis - per - sit su - per - bos
in bra - chi - o su - o. Dis - per - sit su - per - bos
in bra - - - - - chi - o su - o. Dis - per - sit su - per - bos
bra - - - - - chi - o su - o. Dis - per - sit su - per - bos

6 #3 6 6 # 1 1 6

Biber - Magnificat

23

Vln. 1

Vln. 2

Vla. 1

Vla. 2

S

A

T

B

BC

men - te cor - dis su - i.

men - te cor - dis su - i.

men - te cor - dis su - i.

men - te cor - dis su - i. *Solo* De - po - su - it po - ten - tes, po - ten - tes de se - - -

6 b5 4 3 6 7 6 6 7 #6

25

Vln. 1

Vln. 2

Vla. 1

Vla. 2

S

A

T

B

BC

de, et ex - al - ta - - - vit hu - mi - les et ex - al - ta -

6 6 4# 6 5 7 6 6

Biber - Magnificat

27

Vln. 1

Vln. 2

Vla. 1

Vla. 2

S

A

T

B

BC

vit hu - mi-tes, et ex - al - ta - vit hu - mi-les.

6 5 6 4# 6 6 6 5 5/3 6 5/3

29

Vln. 1

Vln. 2

Vla. 1

Vla. 2

S

A

T

B

BC

Solo

e - su - ri - en - tes im-ple-vit bo - nis, im - ple - - - - vit, im - ple -

6 7 6 b5 6 5 6 5 6 #

Biber - Magnificat

31

Vln. 1

Vln. 2

Vla. 1

Vla. 2

S

A
vit bo - nis, et di - vi-tes di - mi - sit, di - mi - sit, di - mi - sit in -

T

B

BC
6 4# 6 6 6 6

33

Vln. 1

Vln. 2

Vla. 1

Vla. 2

S

A
a - - - nes, in - a - - nes. *Solo*

T
Su - sce - pit Is - ra - el pu - e - rum su -

B

BC
6 6

Biber - Magnificat

35

Vln. 1

Vln. 2

Vla. 1

Vla. 2

S

A

T

B

BC

um, re - cor - da - tus mi - se - ri - cor - di - ae, re - cor - da - tus mi - se - ri - cor - di - ae su - ae.

Si - cut lo -

Si - cut lo -

Si - cut lo -

5 6 # 9 6 # 6 6 7 6 6

6 4

37

Vln. 1

Vln. 2

Vla. 1

Vla. 2

S

A

T

B

BC

cu - tus est ad pa - tres nos - tros, A - bra - ham et se -

cu - tus est ad pa - tres nos - tros, A - bra - ham et se -

cu - tus est ad pa - tres nos - tros, A - bra - ham et se -

cu - tus est ad pa - tres nos - tros, A - bra - ham et se -

6 9 # 1 1 6

3

Biber - Magnificat

39

Vln. 1

Vln. 2

Vla. 1

Vla. 2

S

A

T

B

BC

mi-ni-e - ius in sae - - - cu - la.

mi-ni-e - ius in sae - - - cu - la.

mi-ni - e - ius, se-mi-ni e - ius in sae - cu - la.

mi-ni - e - ius in sae - - - cu - la.

6 5 6 6 5 3 6 5 # 7 6 5 #

42

Grave

Vln. 1

Vln. 2

Vla. 1

Vla. 2

S

A

T

B

BC

Grave

Solo

Glo - - - - - ri - a, glo - - - - -

Solo

Glo - - - - - ri - a, glo - - - - -

Grave

Biber - Magnificat

46

Vln. 1

Vln. 2

Vla. 1

Vla. 2

S

A

T

B

BC

ri - a Pa - tri,
Solo

Glo - - - - - ri-a, glo - - - - -

ri - a Pa - tri,
Solo

Glo - - - - - ri-a, glo - - - - -

6 # 6

50

Vln. 1

Vln. 2

Vla. 1

Vla. 2

S

A

T

B

BC

glo - - - - - ri-a et

ri - a et Fi - li-o glo - - - - -

glo - - - - - ri-a et

ri - a et Fi - li-o glo - - - - -

6 # 6 # 6 b6 5

Biber - Magnificat

54

Vln. 1

Vln. 2

Vla. 1

Vla. 2

S
glo - ri - a et Spi - ri - tu - i Sanc - to.

A
ri - a et Spi - ri - tu - i Sanc - to.

T
glo - ri - a et Spi - ri - tu - i Sanc - to.

B
ri - a et Spi - ri - tu - i Sanc - to.

BC
6 # 6 4 #

57

Vln. 1

Vln. 2

Vla. 1

Vla. 2

S
Tutti
Si - cut e - rat in prin - ci - pi - o et nunc et sem - per,

A
Tutti
Si - cut e - rat in prin - ci - pi - o et nunc et sem - per,

T
Tutti
Si - cut e - rat in prin - ci - pi - o et nunc et sem - per,

B
Tutti
Si - cut e - rat in prin - ci - pi - o et nunc et sem - per,

BC
6 6 5 # 7/3 4 # 6 7 # 6

Biber - Magnificat

60 **Presto**

Vln. 1

Vln. 2

Vla. 1

Vla. 2

S

A

T

B

BC

et in sae - cu-la

et, et in sae - cu-la sae - cu - lo-rum, in sae - cu-la

et, et in sae - cu-la sae - cu -

et, et in sae - cu-la sae - cu - lo-rum, in sae - cu -

6 6 3 6 5 6 7 6 6 7 # 6

65

Vln. 1

Vln. 2

Vla. 1

Vla. 2

S

A

T

B

BC

sae - cu - lo-rum. A - - - - - men, a - men. Et in sae - cu-la

sae - cu - lo - - - - - rum. A - - - - - men, a - men.

lo-rum, sae - cu - lo - rum. Et in sae - cu-la sae - cu - lo-rum. A -

la sae - cu - lo - rum. A -

4 # 3 3 3 3 5 8 5 6 5 4 2 4 3 6

Biber - Magnificat

70

Vln. 1

Vln. 2

Vla. 1

Vla. 2

S
sae - cu - lo - rum. A - men. A - - -

A
A - - - - - men,

T
8
men. A - - - - - men,

B
men, a - - - men. Et in sae - cu - la sae - cu -

BC
5 6 6 5 6 7 6 5/3 5/3 6/4 5/3 4/2

74

Vln. 1

Vln. 2

Vla. 1

Vla. 2

S
men, a - - - men.

A
+
a - - - men. Et in sae - cu - la sae - cu - lo - rum. A - - - - -

T
8
a - - - men. A - - - - -

B
lo - rum. A - - - - - men, a - men. et in

BC
4 # 6 5 6 3 6 5 6 7 # 4 3 5/3 8/6

Biber - Magnificat

78

Vln. 1

Vln. 2

Vla. 1

Vla. 2

S

A

T

B

BC

A - - - - - men, a - men. Et in
 men, a - men. Et in sae - cu-la sae - cu - lo - rum, et in sae - cu-la sae - cu -
 men, a - men. Et in sae - cu-la sae - cu - lo-rum. A - men, et in
 sae - cu-la sae - cu - lo - rum. A - - - - - men, a - men.

5 6 5 9 4 3 6 5 6 3 6 5 6 7 6 4 5
 3 4 3 4

83

Vln. 1

Vln. 2

Vla. 1

Vla. 2

S

A

T

B

BC

sae - cu-la, et in sae - cu-la sae - cu - lo - rum. A - men, a - men.
 lo - rum, et in sae - cu-la sae - cu - lo - rum. A - men, a - men.
 sae - cu-la sae - cu - lo - rum. A - men, a - - - - - men.
 et in sae - cu-la et in sae - cu-la sae - cu - lo - rum. A - - - - - men.

5 5 4 4 3

Violin 1

MAGNIFICAT

Vesperæ longiores

Heinrich Ignaz von Biber

3

5

8

11

14

19

22

24

26

Transcriptie uit de originele uitgave door Johann Baptist Mayr te Salzburg, 1693

Biber - Magnificat

28

37

40 Grave

43

49

56

60 Presto

65

72

78

83

Detailed description: This image shows a page of musical notation for Heinrich Biber's Magnificat. The score is written in treble clef with a key signature of two sharps (F# and C#). It consists of ten staves of music, numbered 28 through 83. The notation includes various rhythmic values, accidentals, and dynamic markings. A 'Grave' marking is enclosed in a box above measure 40, and a 'Presto' marking is enclosed in a box above measure 60. There are also numerical markings (7, 2, 4, 2, 2) above some measures, likely indicating fingerings or breath marks. The piece concludes with a double bar line at measure 83.

Violin 2

MAGNIFICAT

Vesperæ longiores

Heinrich Ignaz von Biber

3

6

9

12

17

19

21

24

26

28

Transcriptie uit de originele uitgave door Johann Baptist Mayr te Salzburg, 1693

Viola 1

MAGNIFICAT

Vesperæ longiores

Heinrich Ignaz von Biber

3

6

9

12

17

20

23

31

34

Transcriptie uit de originele uitgave door Johann Baptist Mayr te Salzburg, 1693

Biber - Magnificat

37



40



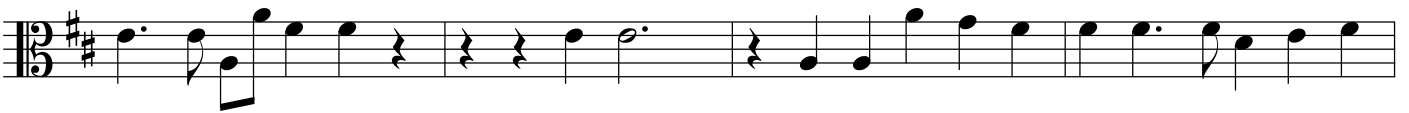
44



50



55



59



63



67



72



76



80



84



Viola 2

MAGNIFICAT

Vesperæ longiores

Heinrich Ignaz von Biber

3

6

9

12

17

20

23

31

33

3

6

Transcriptie uit de originele uitgave door Johann Baptist Mayr te Salzburg, 1693

Biber - Magnificat

35

Musical staff for measure 35, featuring a bass clef and a key signature of two sharps (F# and C#). The staff contains a sequence of eighth and quarter notes.

38

Musical staff for measure 38, featuring a bass clef and a key signature of two sharps. The staff contains a sequence of eighth and quarter notes.

41

Musical staff for measure 41, featuring a bass clef and a key signature of two sharps. A 6/4 time signature change is indicated at the start of the measure.

45

Musical staff for measure 45, featuring a bass clef and a key signature of two sharps. A fermata is placed over the first measure, with a '2' above it indicating a second ending.

51

Musical staff for measure 51, featuring a bass clef and a key signature of two sharps. The staff contains a sequence of eighth and quarter notes.

56

Musical staff for measure 56, featuring a bass clef and a key signature of two sharps. A fermata is placed over the final measure, with a '3' above it indicating a triplet.

63

Musical staff for measure 63, featuring a bass clef and a key signature of two sharps. The staff contains a sequence of eighth and quarter notes.

68

Musical staff for measure 68, featuring a bass clef and a key signature of two sharps. The staff contains a sequence of eighth and quarter notes.

74

Musical staff for measure 74, featuring a bass clef and a key signature of two sharps. A fermata is placed over the first measure, with a '2' above it indicating a second ending.

79

Musical staff for measure 79, featuring a bass clef and a key signature of two sharps. The staff contains a sequence of eighth and quarter notes.

83

Musical staff for measure 83, featuring a bass clef and a key signature of two sharps. The staff contains a sequence of eighth and quarter notes, ending with a double bar line.

Cello

MAGNIFICAT

Vesperæ longiores

Heinrich Ignaz von Biber

The image displays a musical score for the Cello part of the Magnificat by Heinrich Ignaz von Biber. The score is written in bass clef with a key signature of two sharps (D major) and a 4/2 time signature. It consists of ten staves of music, each beginning with a measure number: 1, 5, 9, 13, 16, 19, 21, 24, 27, and 30. The notation includes various rhythmic values such as quarter, eighth, and sixteenth notes, as well as rests and accidentals. The piece concludes with a final double bar line on the tenth staff.

Transcriptie uit de originele uitgave door Johann Baptist Mayr te Salzburg, 1693

Biber - Magnificat

33



37



39



42

Grave



50



57



Presto

60



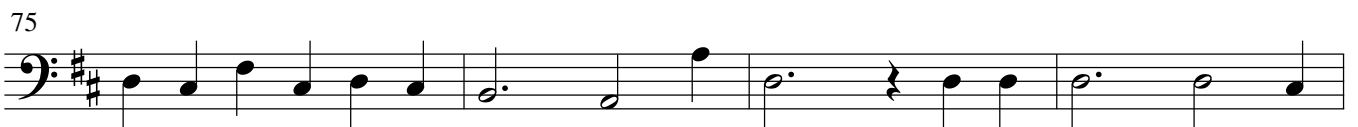
65



70



75



79



83



Basso Continuo

MAGNIFICAT

Vesperæ longiores

Heinrich Ignaz von Biber

6 6 5 6 7 6 6 4 6

5

6 5 6 6 5 6 6 6 6 6 6 6 6 6 6 6 6

9

6 5 6 6 5 4 # 6 6 6 # # # 3 6 6 7 3 4 b 3 7 6 5

13

3 3 3 3 3 3 3 6 6 4 # 6

16

b 6 4 3 1 1 1 3 2 2 3

19

6 6 5 5 6 # 6 6 6 6

21

6 # 3 6 6 # 1 1 6 6 b 5 4 3

24

6 7 6 6 7 # 6 6 4 # 6 5 7 6 6

27

6 5 6 4 # 6 6 6 5 5 6 5 3 4 3 6 7 6 b 5

30

6 5 6 # 6 # 6 4 # 6 6 6 # 6 6

Transcriptie uit de originele uitgave door Johann Baptist Mayr te Salzburg, 1693

Biber - Magnificat

33

Musical staff 33 in bass clef, key of D major. The staff contains a sequence of notes with a sixteenth-note triplet at the beginning. Fingering numbers 6, 6, 5 6, and 9 6 4 are placed below the notes.

36

Musical staff 36 in bass clef, key of D major. The staff contains a sequence of notes with a sixteenth-note triplet at the end. Fingering numbers 6 7 6, 6, #, #, 6 9 3, #, 1 1, and 6 are placed below the notes.

39

Musical staff 39 in bass clef, key of D major. The staff contains a sequence of notes with a sixteenth-note triplet at the end. Fingering numbers 6, 5 6 6 5 5 3, 6 #, # 7 6 5 #, and 3 4 4 are placed below the notes.

42

Grave

Musical staff 42 in bass clef, key of D major, 6/4 time signature. The staff contains a sequence of notes with a sixteenth-note triplet at the end. Fingering numbers 6, #, 6, and 7 are placed below the notes.

50

Musical staff 50 in bass clef, key of D major. The staff contains a sequence of notes with a sixteenth-note triplet at the end. Fingering numbers 6, # 7, #, 6, b 6 5, 6, #, 6, 4 #, and 6 are placed below the notes.

57

Presto

Musical staff 57 in bass clef, key of D major. The staff contains a sequence of notes with a sixteenth-note triplet at the end. Fingering numbers 6, 6 5 # 7 3, 4 #, 6, 7 #, and 6 are placed below the notes.

60

Musical staff 60 in treble clef, key of D major. The staff contains a sequence of notes with a sixteenth-note triplet at the end. Fingering numbers 6, 6 3, 6 5 6 7 6, 6, 7 #, and 6 are placed below the notes.

65

Musical staff 65 in bass clef, key of D major. The staff contains a sequence of notes with a sixteenth-note triplet at the end. Fingering numbers 4 #, 3 3 3 3 5 8 5 6 5 4, 3 6 6 4 3 2, 4 3, and 6 are placed below the notes.

70

Musical staff 70 in bass clef, key of D major. The staff contains a sequence of notes with a sixteenth-note triplet at the end. Fingering numbers 5 6, 6 5 6 7 6, 5 8 5 6 5 4, 4 #, and 6 are placed below the notes.

75

Musical staff 75 in bass clef, key of D major. The staff contains a sequence of notes with a sixteenth-note triplet at the end. Fingering numbers 5 6 3 6 5 6 7 # 6, 4 3, 5 8 5 6 5 9, 3 6 3 4 3 4, and 4 are placed below the notes.

79

Musical staff 79 in bass clef, key of D major. The staff contains a sequence of notes with a sixteenth-note triplet at the end. Fingering numbers 4 3, 6 5 6 3 6 5 6 7 6, 4 5, and 3 are placed below the notes.

83

Musical staff 83 in bass clef, key of D major. The staff contains a sequence of notes with a sixteenth-note triplet at the end. Fingering numbers 5 and 5 4 4 3 are placed below the notes.